

# ELF1 antibody - middle region

Rabbit Polyclonal Antibody

Catalog # AI16254

## Product Information

---

<b>Application</b>	WB
<b>Primary Accession</b>	<a href="#">P32519</a>
<b>Other Accession</b>	<a href="#">NM_172373</a> , <a href="#">NP_758961</a>
<b>Reactivity</b>	Human, Rabbit, Horse
<b>Predicted</b>	Human, Rabbit, Horse
<b>Host</b>	Rabbit
<b>Clonality</b>	Polyclonal
<b>Calculated MW</b>	67498

## Additional Information

---

<b>Gene ID</b>	1997
<b>Other Names</b>	ETS-related transcription factor Elf-1, E74-like factor 1, ELF1
<b>Format</b>	Liquid. Purified antibody supplied in 1x PBS buffer with 0.09% (w/v) sodium azide and 2% sucrose.
<b>Reconstitution &amp; Storage</b>	Add 50 ul of distilled water. Final anti-ELF1 antibody concentration is 1 mg/ml in PBS buffer with 2% sucrose. For longer periods of storage, store at 20°C. Avoid repeat freeze-thaw cycles.
<b>Precautions</b>	ELF1 antibody - middle region is for research use only and not for use in diagnostic or therapeutic procedures.

## Protein Information

---

<b>Name</b>	ELF1
<b>Function</b>	Transcription factor that activates the LYN and BLK promoters. Appears to be required for the T-cell-receptor-mediated trans activation of HIV-2 gene expression. Binds specifically to two purine-rich motifs in the HIV-2 enhancer.
<b>Cellular Location</b>	Nucleus.
<b>Tissue Location</b>	In fetal tissues, it is highly expressed in heart, lung liver and kidney, and weakly expressed in brain. In adult, it is highly expressed in pancreas, spleen, thymus and peripheral blood leukocytes, expressed at moderate levels in heart, placenta, lung, liver, skeletal muscle, kidney, prostate, ovary, small intestine and colon, and weakly expressed in brain and testis

## Background

---

Transcription factor that activates the LYN and BLK promoters. Appears to be required for the T-cell-receptor-mediated trans activation of HIV-2 gene expression. Binds specifically to two purine-rich motifs in the HIV-2 enhancer.

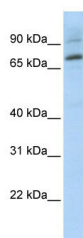
## References

---

Leiden J.M.,et al.J. Virol. 66:5890-5897(1992).  
Ota T.,et al.Nat. Genet. 36:40-45(2004).  
Dunham A.,et al.Nature 428:522-528(2004).  
Mural R.J.,et al.Submitted (JUL-2005) to the EMBL/GenBank/DDBJ databases.  
Thompson C.B.,et al.Mol. Cell. Biol. 12:1043-1053(1992).

## Images

---



WB Suggested Anti-ELF1 Antibody Titration: 0.2-1 µg/ml  
ELISA Titer: 1:12500  
Positive Control: Transfected 293T

Please note: All products are 'FOR RESEARCH USE ONLY. NOT FOR USE IN DIAGNOSTIC OR THERAPEUTIC PROCEDURES'.