

# PAX2 antibody - middle region

Rabbit Polyclonal Antibody  
Catalog # AI16253

## Product Information

---

<b>Application</b>	WB, IHC
<b>Primary Accession</b>	<a href="#">Q02962</a>
<b>Other Accession</b>	<a href="#">NM_003988</a> , <a href="#">NP_003979</a>
<b>Reactivity</b>	Human, Mouse, Rat, Rabbit, Pig, Dog, Guinea Pig, Bovine, Sheep
<b>Predicted</b>	Human, Mouse, Rat, Rabbit, Pig, Chicken, Dog, Guinea Pig, Bovine, Sheep
<b>Host</b>	Rabbit
<b>Clonality</b>	Polyclonal
<b>Calculated MW</b>	44706

## Additional Information

---

<b>Gene ID</b>	5076
<b>Other Names</b>	Paired box protein Pax-2, PAX2
<b>Format</b>	Liquid. Purified antibody supplied in 1x PBS buffer with 0.09% (w/v) sodium azide and 2% sucrose.
<b>Reconstitution &amp; Storage</b>	Add 100 ul of distilled water. Final anti-PAX2 antibody concentration is 1 mg/ml in PBS buffer with 2% sucrose. For longer periods of storage, store at 20°C. Avoid repeat freeze-thaw cycles.
<b>Precautions</b>	PAX2 antibody - middle region is for research use only and not for use in diagnostic or therapeutic procedures.

## Protein Information

---

<b>Name</b>	PAX2
<b>Function</b>	Transcription factor that may have a role in kidney cell differentiation (PubMed: <a href="#">24676634</a> ). Has a critical role in the development of the urogenital tract, the eyes, and the CNS.
<b>Cellular Location</b>	Nucleus.
<b>Tissue Location</b>	Expressed in primitive cells of the kidney, ureter, eye, ear and central nervous system

## Background

---

Transcription factor that may have a role in kidney cell differentiation (PubMed: [24676634](https://pubmed.ncbi.nlm.nih.gov/24676634/)). Has a critical role in the development of the urogenital tract, the eyes, and the CNS.

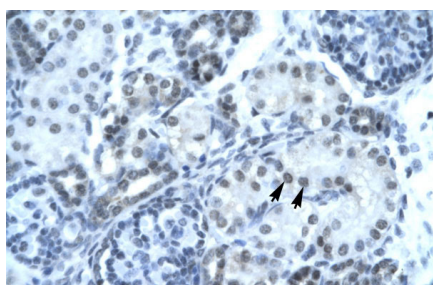
## References

---

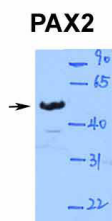
Eccles M.R.,et al.Cell Growth Differ. 3:279-289(1992).  
Ward T.A.,et al.Cell Growth Differ. 5:1015-1021(1994).  
Sanyanusin P.,et al.Genomics 35:258-261(1996).  
Deloukas P.,et al.Nature 429:375-381(2004).  
Mural R.J.,et al.Submitted (SEP-2005) to the EMBL/GenBank/DDBJ databases.

## Images

---



Rabbit Anti-PAX2 Antibody  
Paraffin Embedded Tissue: Human Kidney  
Cellular Data: Epithelial cells of renal tubule  
Antibody Concentration: 4.0-8.0 µg/ml  
Magnification: 400X



WB Suggested Anti-PAX2 Antibody Titration: 1.0µg/ml  
ELISA Titer: 1:312500  
Positive Control: Fetal Kidney

See Immunoblot 1 Data and Customer Feedback tab for more information.

Please note: All products are 'FOR RESEARCH USE ONLY. NOT FOR USE IN DIAGNOSTIC OR THERAPEUTIC PROCEDURES'.