

ETV6 antibody - N-terminal region

Rabbit Polyclonal Antibody

Catalog # AI16243

Product Information

Application	WB
Primary Accession	P41212
Other Accession	NM_001987 , NP_001978
Reactivity	Human, Mouse, Rat, Rabbit, Pig, Dog, Guinea Pig, Horse, Bovine
Predicted	Human, Mouse, Rat, Rabbit, Pig, Chicken, Dog, Guinea Pig, Horse, Bovine
Host	Rabbit
Clonality	Polyclonal
Calculated MW	53000

Additional Information

Gene ID	2120
Alias Symbol	TEL, TEL/ABL
Other Names	Transcription factor ETV6, ETS translocation variant 6, ETS-related protein Tel1, Tel, ETV6, TEL, TEL1
Format	Liquid. Purified antibody supplied in 1x PBS buffer with 0.09% (w/v) sodium azide and 2% sucrose.
Reconstitution & Storage	Add 50 ul of distilled water. Final anti-ETV6 antibody concentration is 1 mg/ml in PBS buffer with 2% sucrose. For longer periods of storage, store at 20°C. Avoid repeat freeze-thaw cycles.
Precautions	ETV6 antibody - N-terminal region is for research use only and not for use in diagnostic or therapeutic procedures.

Protein Information

Name	ETV6
Synonyms	TEL, TEL1
Function	Transcriptional repressor; binds to the DNA sequence 5'- CCGGAAGT-3'. Plays a role in hematopoiesis and malignant transformation.
Cellular Location	Nucleus.
Tissue Location	Ubiquitous.

Background

Transcriptional repressor; binds to the DNA sequence 5'- CCGGAAGT-3'.

References

Golub T.R.,et al.Cell 77:307-316(1994).

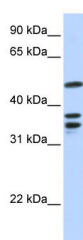
Ota T.,et al.Nat. Genet. 36:40-45(2004).

Mural R.J.,et al.Submitted (JUL-2005) to the EMBL/GenBank/DDBJ databases.

Baens M.,et al.Genome Res. 6:404-413(1996).

Mullighan C.G.,et al.Nature 446:758-764(2007).

Images



WB Suggested Anti-ETV6 Antibody Titration: 0.2-1 µg/ml

ELISA Titer: 1:1562500

Positive Control: 721_B cell lysate

ETV6 is supported by BioGPS gene expression data to be expressed in 721_B

Please note: All products are 'FOR RESEARCH USE ONLY. NOT FOR USE IN DIAGNOSTIC OR THERAPEUTIC PROCEDURES'.