

# PCP Antibody - N-terminal region

Rabbit Polyclonal Antibody

Catalog # AI16119

## Product Information

---

<b>Application</b>	WB
<b>Primary Accession</b>	<a href="#">P42785</a>
<b>Reactivity</b>	Human
<b>Host</b>	Rabbit
<b>Clonality</b>	Polyclonal
<b>Calculated MW</b>	55800

## Additional Information

---

<b>Gene ID</b>	5547
<b>Alias Symbol</b> <b>Other Names</b>	PRCP, PCP, Lysosomal Pro-X carboxypeptidase, 3.4.16.2, Angiotensinase C, Lysosomal carboxypeptidase C, Proline carboxypeptidase, Prolylcarboxypeptidase, PRCP, PRCP, PCP
<b>Format</b>	Liquid. Purified antibody supplied in 1x PBS buffer with 0.09% (w/v) sodium azide and 2% sucrose.
<b>Reconstitution &amp; Storage</b>	Add 50 $\mu$ l of distilled water. Final Anti-PCP antibody concentration is 1 mg/ml in PBS buffer with 2% sucrose. For longer periods of storage, store at -20°C. Avoid repeat freeze-thaw cycles.
<b>Precautions</b>	PCP Antibody - N-terminal region is for research use only and not for use in diagnostic or therapeutic procedures.

## Protein Information

---

<b>Name</b>	PRCP
<b>Synonyms</b>	PCP
<b>Function</b>	Cleaves C-terminal amino acids linked to proline in peptides such as angiotensin II, III and des-Arg9-bradykinin. This cleavage occurs at acidic pH, but enzymatic activity is retained with some substrates at neutral pH.
<b>Cellular Location</b>	Lysosome.
<b>Tissue Location</b>	Highest levels in placenta, lung and liver. Also present in heart, brain, pancreas and kidney

## Background

---

Cleaves C-terminal amino acids linked to proline in peptides such as angiotensin II, III and des-Arg9-bradykinin. This cleavage occurs at acidic pH, but enzymatic activity is retained with some substrates at neutral pH.

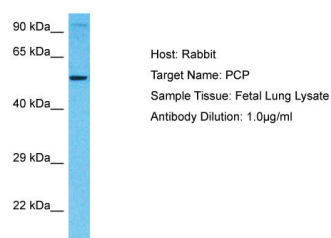
## References

---

Tan F.,et al.J. Biol. Chem. 268:16631-16638(1993).  
Tan F.,et al.J. Biol. Chem. 268:26032-26032(1993).  
Ota T.,et al.Nat. Genet. 36:40-45(2004).  
Goshima N.,et al.Nat. Methods 5:1011-1017(2008).  
Taylor T.D.,et al.Nature 440:497-500(2006).

## Images

---



Host: Rabbit  
Target Name: PCP  
Sample Tissue: Fetal Lung lysates  
Antibody Dilution: 1.0µg/ml

Please note: All products are 'FOR RESEARCH USE ONLY. NOT FOR USE IN DIAGNOSTIC OR THERAPEUTIC PROCEDURES'.