

MATK Antibody - C-terminal region

Rabbit Polyclonal Antibody

Catalog # AI16043

Product Information

Application	WB
Primary Accession	P42679
Other Accession	NP_647612
Reactivity	Human
Host	Rabbit
Clonality	Polyclonal
Calculated MW	56469

Additional Information

Gene ID	4145
Alias Symbol Other Names	MATK, CTK, HYL, Megakaryocyte-associated tyrosine-protein kinase, 2.7.10.2, CSK homologous kinase, CHK, Hematopoietic consensus tyrosine-lacking kinase, Protein kinase HYL, Tyrosine-protein kinase CTK, MATK, CTK, HYL
Format	Liquid. Purified antibody supplied in 1x PBS buffer with 0.09% (w/v) sodium azide and 2% sucrose.
Reconstitution & Storage	Add 50 μ l of distilled water. Final Anti-MATK antibody concentration is 1 mg/ml in PBS buffer with 2% sucrose. For longer periods of storage, store at -20°C. Avoid repeat freeze-thaw cycles.
Precautions	MATK Antibody - C-terminal region is for research use only and not for use in diagnostic or therapeutic procedures.

Protein Information

Name	MATK
Synonyms	CTK, HYL
Function	Could play a significant role in the signal transduction of hematopoietic cells. May regulate tyrosine kinase activity of SRC- family members in brain by specifically phosphorylating their C- terminal regulatory tyrosine residue which acts as a negative regulatory site. It may play an inhibitory role in the control of T- cell proliferation.
Cellular Location	Cytoplasm. Membrane. Note=In platelets, 90% of MATK localizes to the membrane fraction, and translocates to the cytoskeleton upon thrombin

stimulation

Tissue Location

Expressed in various myeloid cell lines, detected in brain and lung

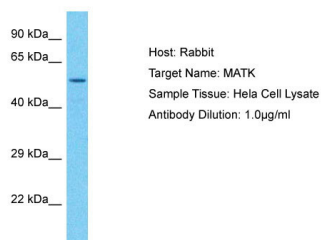
Background

Could play a significant role in the signal transduction of hematopoietic cells. May regulate tyrosine kinase activity of SRC-family members in brain by specifically phosphorylating their C-terminal regulatory tyrosine residue which acts as a negative regulatory site. It may play an inhibitory role in the control of T-cell proliferation.

References

Sakano S.,et al.Oncogene 9:1155-1161(1994).
Bennett B.D.,et al.J. Biol. Chem. 269:1068-1074(1994).
Avraham S.,et al.J. Biol. Chem. 270:1833-1842(1995).
Ota T.,et al.Nat. Genet. 36:40-45(2004).
Bechtel S.,et al.BMC Genomics 8:399-399(2007).

Images



Host: Rabbit
Target Name: MATK
Sample Tissue: HeLa Whole cell lysate
S
Antibody Dilution: 1.0µg/ml

Please note: All products are 'FOR RESEARCH USE ONLY. NOT FOR USE IN DIAGNOSTIC OR THERAPEUTIC PROCEDURES'.