

CFI Antibody - C-terminal region

Rabbit Polyclonal Antibody

Catalog # AI15961

Product Information

| | |
|--------------------------|--|
| Application | WB |
| Primary Accession | P05156 |
| Other Accession | NM_000204 , NP_000195 |
| Reactivity | Human, Mouse, Rat, Rabbit, Pig, Dog, Guinea Pig, Horse, Bovine |
| Predicted | Human, Mouse, Rat, Rabbit, Pig, Dog, Guinea Pig, Horse, Bovine |
| Host | Rabbit |
| Clonality | Polyclonal |
| Calculated MW | 65750 |

Additional Information

| | |
|---|--|
| Gene ID | 3426 |
| Alias Symbol Other Names | CFI, IF, Complement factor I, 3.4.21.45, C3B/C4B inactivator, Complement factor I heavy chain, Complement factor I light chain, CFI, IF |
| Format | Liquid. Purified antibody supplied in 1x PBS buffer with 0.09% (w/v) sodium azide and 2% sucrose. |
| Reconstitution & Storage | Add 50 μ l of distilled water. Final Anti-CFI antibody concentration is 1 mg/ml in PBS buffer with 2% sucrose. For longer periods of storage, store at -20°C. Avoid repeat freeze-thaw cycles. |
| Precautions | CFI Antibody - C-terminal region is for research use only and not for use in diagnostic or therapeutic procedures. |

Protein Information

| | |
|-----------------|---|
| Name | CFI |
| Synonyms | IF |
| Function | Trypsin-like serine protease that plays an essential role in regulating the immune response by controlling all complement pathways. Inhibits these pathways by cleaving three peptide bonds in the alpha- chain of C3b and two bonds in the alpha-chain of C4b thereby inactivating these proteins (PubMed: 17320177 , PubMed: 7360115). Essential cofactors for these reactions include factor H and C4BP in the fluid phase and membrane cofactor protein/CD46 and CR1 on cell surfaces (PubMed: 12055245 , PubMed: 2141838 , PubMed: 9605165). The presence of these cofactors on healthy cells allows |

degradation of deposited C3b by CFI in order to prevent undesired complement activation, while in apoptotic cells or microbes, the absence of such cofactors leads to C3b-mediated complement activation and subsequent opsonization (PubMed:[28671664](#)).

Cellular Location

Secreted, extracellular space. Secreted

Tissue Location

Expressed in the liver by hepatocytes (PubMed:6327681). Also present in other cells such as monocytes, fibroblasts or keratinocytes (PubMed:17320177, PubMed:6444659)

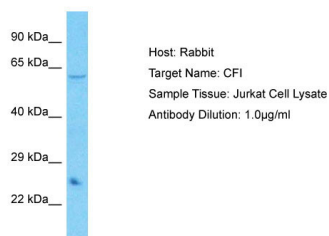
Background

Responsible for cleaving the alpha-chains of C4b and C3b in the presence of the cofactors C4-binding protein and factor H respectively.

References

Catterall C.F.,et al.Biochem. J. 242:849-856(1987).
Goldberger G.,et al.J. Biol. Chem. 262:10065-10071(1987).
Hillier L.W.,et al.Nature 434:724-731(2005).
Minta J.O.,et al.Gene 208:17-24(1998).
Ullman C.G.,et al.FEBS Lett. 371:199-203(1995).

Images



Host: Rabbit
Target Name: CFI
Sample Tissue: Jurkat Whole Cell lysates
Antibody Dilution: 1.0µg/ml

Please note: All products are 'FOR RESEARCH USE ONLY. NOT FOR USE IN DIAGNOSTIC OR THERAPEUTIC PROCEDURES'.