

OR2L2 Antibody - C-terminal region

Rabbit Polyclonal Antibody

Catalog # AI15906

Product Information

Application	WB
Primary Accession	Q8NH16
Other Accession	NM_001004686 , NP_001004686
Reactivity	Human, Mouse, Rat, Rabbit, Dog, Guinea Pig, Horse, Bovine
Predicted	Human, Mouse, Rat, Rabbit, Pig, Dog, Guinea Pig, Horse, Bovine
Host	Rabbit
Clonality	Polyclonal
Calculated MW	35495

Additional Information

Gene ID	26246
Alias Symbol Other Names	HSHTPCRH07, HTPCRH07, OR1-48, OR2L12, OR2L4P Olfactory receptor 2L2, HTPCRH07, Olfactory receptor 2L12, Olfactory receptor 2L4, OR2L2, OR2L12, OR2L4P
Format	Liquid. Purified antibody supplied in 1x PBS buffer with 0.09% (w/v) sodium azide and 2% sucrose.
Reconstitution & Storage	Add 50 ul of distilled water. Final anti-OR2L2 antibody concentration is 1 mg/ml in PBS buffer with 2% sucrose. For longer periods of storage, store at 20°C. Avoid repeat freeze-thaw cycles.
Precautions	OR2L2 Antibody - C-terminal region is for research use only and not for use in diagnostic or therapeutic procedures.

Protein Information

Name	OR2L2
Synonyms	OR2L12, OR2L4P
Function	Odorant receptor.
Cellular Location	Cell membrane; Multi-pass membrane protein.

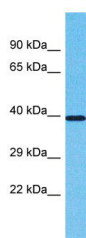
Background

Odorant receptor.

References

Suwa M.,et al.Submitted (JUL-2001) to the EMBL/GenBank/DDBJ databases.
Parmentier M.,et al.Nature 355:453-455(1992).

Images



Host: Rabbit
Target Name: OR2L2
Sample Tissue: Hela Whole cell lysate
S
Antibody Dilution: 1.0µg/ml

Please note: All products are 'FOR RESEARCH USE ONLY. NOT FOR USE IN DIAGNOSTIC OR THERAPEUTIC PROCEDURES'.