

# NSMCE4A Antibody - C-terminal region

Rabbit Polyclonal Antibody

Catalog # AI15899

## Product Information

---

<b>Application</b>	WB, IF
<b>Primary Accession</b>	<a href="#">Q9NXX6</a>
<b>Other Accession</b>	<a href="#">NM_017615</a> , <a href="#">NP_060085</a>
<b>Reactivity</b>	Human, Mouse, Rat, Rabbit, Dog, Guinea Pig, Horse, Bovine
<b>Predicted</b>	Human, Mouse, Rat, Rabbit, Pig, Dog, Guinea Pig, Horse, Bovine
<b>Host</b>	Rabbit
<b>Clonality</b>	Polyclonal
<b>Calculated MW</b>	44301

## Additional Information

---

<b>Gene ID</b>	54780
<b>Alias Symbol</b>	C10orf86, NS4EA, NSE4A
<b>Other Names</b>	Non-structural maintenance of chromosomes element 4 homolog A, NS4EA, Non-SMC element 4 homolog A, NSMCE4A, C10orf86
<b>Format</b>	Liquid. Purified antibody supplied in 1x PBS buffer with 0.09% (w/v) sodium azide and 2% sucrose.
<b>Reconstitution &amp; Storage</b>	Add 50 ul of distilled water. Final anti-NSMCE4A antibody concentration is 1 mg/ml in PBS buffer with 2% sucrose. For longer periods of storage, store at 20°C. Avoid repeat freeze-thaw cycles.
<b>Precautions</b>	NSMCE4A Antibody - C-terminal region is for research use only and not for use in diagnostic or therapeutic procedures.

## Protein Information

---

<b>Name</b>	NSMCE4A
<b>Synonyms</b>	C10orf86
<b>Function</b>	Component of the SMC5-SMC6 complex, a complex involved in DNA double-strand breaks by homologous recombination. The complex may promote sister chromatid homologous recombination by recruiting the SMC1-SMC3 cohesin complex to double-strand breaks. The complex is required for telomere maintenance via recombination in ALT (alternative lengthening of telomeres) cell lines and mediates sumoylation of shelterin complex (telosome) components which is proposed to lead to shelterin complex disassembly in ALT-associated PML bodies (APBs). Is involved in

positive regulation of response to DNA damage stimulus.

## Cellular Location

Nucleus. Chromosome, telomere

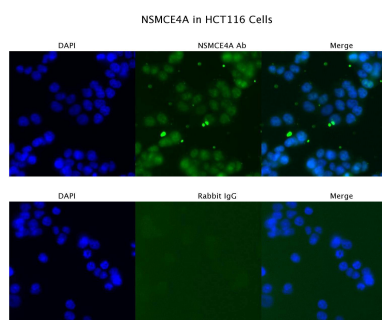
## Background

Component of the SMC5-SMC6 complex, a complex involved in DNA double-strand breaks by homologous recombination. The complex may promote sister chromatid homologous recombination by recruiting the SMC1-SMC3 cohesin complex to double-strand breaks. The complex is required for telomere maintenance via recombination in ALT (alternative lengthening of telomeres) cell lines and mediates sumoylation of shelterin complex (telosome) components which is proposed to lead to shelterin complex disassembly in ALT- associated PML bodies (APBs). Is involved in positive regulation of response to DNA damage stimulus.

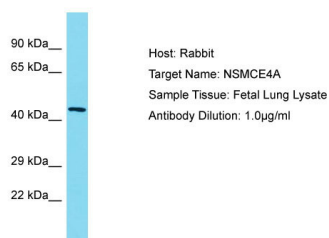
## References

Ota T.,et al.Nat. Genet. 36:40-45(2004).  
Suzuki Y.,et al.Submitted (APR-2005) to the EMBL/GenBank/DDBJ databases.  
Deloukas P.,et al.Nature 429:375-381(2004).  
Wan D.,et al.Proc. Natl. Acad. Sci. U.S.A. 101:15724-15729(2004).  
Matsuoka S.,et al.Science 316:1160-1166(2007).

## Images



Sample Type : HCT116  
Primary Antibody Dilution: 4 µg/ml  
Secondary Antibody : Anti-rabbit Alexa 546  
Secondary Antibody Dilution: 2 µg/ml  
Gene Name : NSMCE4A



Host: Rabbit  
Target Name: NSMCE4A  
Sample Tissue: Fetal Lung lysates  
Antibody Dilution: 1.0µg/ml

Please note: All products are 'FOR RESEARCH USE ONLY. NOT FOR USE IN DIAGNOSTIC OR THERAPEUTIC PROCEDURES'.