

JRKL Antibody - N-terminal region

Rabbit Polyclonal Antibody

Catalog # AI15857

Product Information

Application	WB
Primary Accession	Q9Y4A0
Other Accession	NM_003772 , NP_003763
Reactivity	Human, Mouse, Rat, Rabbit, Dog, Guinea Pig, Bovine
Predicted	Human, Mouse, Rat, Rabbit, Pig, Dog, Guinea Pig, Bovine
Host	Rabbit
Clonality	Polyclonal
Calculated MW	59912

Additional Information

Gene ID	8690
Alias Symbol	HHMJG
Other Names	Jerky protein homolog-like, Human homolog of mouse jerky gene protein, HHMJG, JRKL
Format	Liquid. Purified antibody supplied in 1x PBS buffer with 0.09% (w/v) sodium azide and 2% sucrose.
Reconstitution & Storage	Add 50 ul of distilled water. Final anti-JRKL antibody concentration is 1 mg/ml in PBS buffer with 2% sucrose. For longer periods of storage, store at 20°C. Avoid repeat freeze-thaw cycles.
Precautions	JRKL Antibody - N-terminal region is for research use only and not for use in diagnostic or therapeutic procedures.

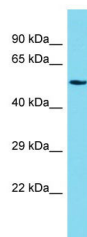
Protein Information

Name	JRKL
Cellular Location	Nucleus {ECO:0000255 PROSITE-ProRule:PRU00320, ECO:0000255 PROSITE-ProRule:PRU00583}
Tissue Location	Abundantly expressed in the majority of tissues examined, including brain and skeletal muscle

References

Ota T.,et al.Nat. Genet. 36:40-45(2004).
Taylor T.D.,et al.Nature 440:497-500(2006).
Mural R.J.,et al.Submitted (JUL-2005) to the EMBL/GenBank/DDBJ databases.
Zeng Z.,et al.Biochem. Biophys. Res. Commun. 236:389-395(1997).

Images



Host: Rabbit
Target Name: JRKL
Sample Tissue: Fetal Heart lysates
Antibody Dilution: 1.0µg/ml

Please note: All products are 'FOR RESEARCH USE ONLY. NOT FOR USE IN DIAGNOSTIC OR THERAPEUTIC PROCEDURES'.