

GPR176 Antibody - C-terminal region

Rabbit Polyclonal Antibody

Catalog # AI15845

Product Information

Application	WB
Primary Accession	Q14439
Other Accession	NM_007223 , NP_009154
Reactivity	Human, Mouse, Rat, Rabbit, Pig, Dog, Guinea Pig, Horse, Bovine, Yeast
Predicted	Human, Mouse, Rat, Rabbit, Pig, Dog, Guinea Pig, Horse, Bovine, Yeast
Host	Rabbit
Clonality	Polyclonal
Calculated MW	56998

Additional Information

Gene ID	11245
Alias Symbol	GPR, Gm1012
Other Names	Probable G-protein coupled receptor 176, HB-954, GPR176
Format	Liquid. Purified antibody supplied in 1x PBS buffer with 0.09% (w/v) sodium azide and 2% sucrose.
Reconstitution & Storage	Add 50 ul of distilled water. Final anti-GPR176 antibody concentration is 1 mg/ml in PBS buffer with 2% sucrose. For longer periods of storage, store at 20°C. Avoid repeat freeze-thaw cycles.
Precautions	GPR176 Antibody - C-terminal region is for research use only and not for use in diagnostic or therapeutic procedures.

Protein Information

Name	GPR176
Function	Orphan receptor involved in normal circadian rhythm behavior. Acts through the G-protein subclass G(z)-alpha and has an agonist- independent basal activity to repress cAMP production.
Cellular Location	Cell membrane {ECO:0000250 UniProtKB:Q80WT4}; Multi-pass membrane protein

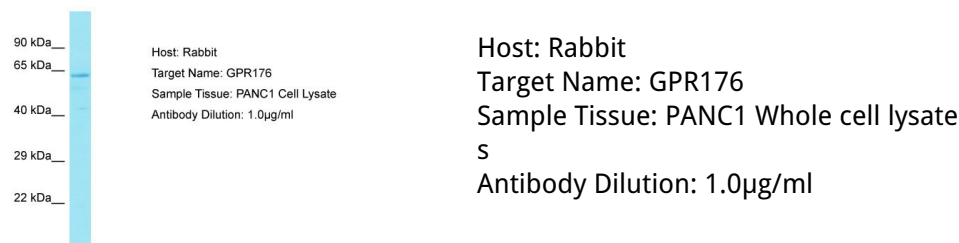
Background

Orphan receptor.

References

Hata S.,et al.Biochim. Biophys. Acta 1261:121-125(1995).

Images



Please note: All products are 'FOR RESEARCH USE ONLY. NOT FOR USE IN DIAGNOSTIC OR THERAPEUTIC PROCEDURES'.