

ENO4 Antibody - N-terminal region

Rabbit Polyclonal Antibody

Catalog # AI15812

Product Information

Application	WB
Primary Accession	A6NNW6
Reactivity	Human, Pig, Dog, Horse
Predicted	Human, Pig, Dog, Horse
Host	Rabbit
Clonality	Polyclonal
Calculated MW	68465

Additional Information

Gene ID	387712
Other Names	Enolase-like protein ENO4, ENO4, C10orf134
Format	Liquid. Purified antibody supplied in 1x PBS buffer with 0.09% (w/v) sodium azide and 2% sucrose.
Reconstitution & Storage	Add 50 ul of distilled water. Final anti-ENO4 antibody concentration is 1 mg/ml in PBS buffer with 2% sucrose. For longer periods of storage, store at 20°C. Avoid repeat freeze-thaw cycles.
Precautions	ENO4 Antibody - N-terminal region is for research use only and not for use in diagnostic or therapeutic procedures.

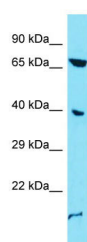
Protein Information

Name	ENO4 (HGNC:31670)
Synonyms	C10orf134
Function	Enolase that catalyzes the conversion of 2-phosphoglycerate to phosphoenolpyruvate in glycolysis and the reverse reaction in gluconeogenesis (By similarity). May be required for sperm motility and function.

References

Bechtel S.,et al.BMC Genomics 8:399-399(2007).
Deloukas P.,et al.Nature 429:375-381(2004).

Images



Host: Rabbit
Target Name: ENO4
Sample Tissue: A549 Whole cell lysate
S
Antibody Dilution: 1.0µg/ml

Please note: All products are 'FOR RESEARCH USE ONLY. NOT FOR USE IN DIAGNOSTIC OR THERAPEUTIC PROCEDURES'.