

DCAF8 Antibody - C-terminal region

Rabbit Polyclonal Antibody

Catalog # AI15801

Product Information

Application	WB
Primary Accession	Q5TAQ9
Other Accession	NM_015726 , NP_056541
Reactivity	Human, Mouse, Rat, Rabbit, Pig, Dog, Guinea Pig, Horse, Bovine
Predicted	Human, Mouse, Rat, Rabbit, Pig, Dog, Guinea Pig, Horse, Bovine
Host	Rabbit
Clonality	Polyclonal
Calculated MW	66852

Additional Information

Gene ID	50717
Alias Symbol	H326, WDR42A
Other Names	DDB1- and CUL4-associated factor 8, WD repeat-containing protein 42A, DCAF8, H326, WDR42A
Format	Liquid. Purified antibody supplied in 1x PBS buffer with 0.09% (w/v) sodium azide and 2% sucrose.
Reconstitution & Storage	Add 50 ul of distilled water. Final anti-DCAF8 antibody concentration is 1 mg/ml in PBS buffer with 2% sucrose. For longer periods of storage, store at 20°C. Avoid repeat freeze-thaw cycles.
Precautions	DCAF8 Antibody - C-terminal region is for research use only and not for use in diagnostic or therapeutic procedures.

Protein Information

Name	DCAF8
Synonyms	H326, WDR42A
Function	May function as a substrate receptor for CUL4-DDB1 E3 ubiquitin-protein ligase complex.
Cellular Location	Nucleus. Cytoplasm. Note=It shuttles between the nucleus and the cytoplasm. Nuclear import is mediated by KPNA1 and KPNB1 under the regulation of nuclear GTPase RAN. Nuclear export to the cytoplasm is XPO1 dependent.

Background

May function as a substrate receptor for CUL4-DDB1 E3 ubiquitin-protein ligase complex.

References

Bergsagel P.L.,et al.Submitted (FEB-1994) to the EMBL/GenBank/DDBJ databases.

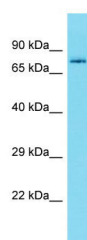
Totoki Y.,et al.Submitted (APR-2005) to the EMBL/GenBank/DDBJ databases.

Bechtel S.,et al.BMC Genomics 8:399-399(2007).

Gregory S.G.,et al.Nature 441:315-321(2006).

Mural R.J.,et al.Submitted (SEP-2005) to the EMBL/GenBank/DDBJ databases.

Images



Host: Rabbit

Target Name: DCAF8

Sample Tissue: 721_B Whole cell lysate

S

Antibody Dilution: 1.0µg/ml DCAF8 is strongly supported by BioGPS gene expression data to be expressed in Human 721_B cells

Please note: All products are 'FOR RESEARCH USE ONLY. NOT FOR USE IN DIAGNOSTIC OR THERAPEUTIC PROCEDURES'.