

MLIP Antibody - middle region

Rabbit Polyclonal Antibody

Catalog # AI15708

Product Information

Application	WB
Primary Accession	Q5VWP3
Other Accession	NM_138569 , NP_612636
Reactivity	Human, Rat, Pig, Dog, Horse, Bovine
Predicted	Human, Rat, Pig, Dog, Horse, Bovine
Host	Rabbit
Clonality	Polyclonal
Calculated MW	105914

Additional Information

Gene ID	90523
Alias Symbol	C6orf142
Other Names	Muscular LMNA-interacting protein, Muscular-enriched A-type laminin-interacting protein, MLIP, C6orf142
Format	Liquid. Purified antibody supplied in 1x PBS buffer with 0.09% (w/v) sodium azide and 2% sucrose.
Reconstitution & Storage	Add 50 ul of distilled water. Final anti-MLIP antibody concentration is 1 mg/ml in PBS buffer with 2% sucrose. For longer periods of storage, store at 20°C. Avoid repeat freeze-thaw cycles.
Precautions	MLIP Antibody - middle region is for research use only and not for use in diagnostic or therapeutic procedures.

Protein Information

Name	MLIP (HGNC:21355)
Function	Required for myoblast differentiation into myotubes, possibly acting as a transcriptional regulator of the myogenic program (By similarity). Required for cardiac adaptation to stress through integrated regulation of the AKT/mTOR pathways and FOXO1. Regulates cardiac homeostasis and plays a role in the protection against cardiac hypertrophy (By similarity). Binds chromatin (By similarity). May act as a transcriptional cofactor for ISL1, repressing its transcriptional activity (By similarity). May also repress MYOCD transcriptional activity (By similarity).
Cellular Location	Nucleus. Nucleus envelope {ECO:0000250 UniProtKB:Q5FW52}. Nucleus, PML

body {ECO:0000250|UniProtKB:Q5FW52}. Cytoplasm, cytosol. Cell membrane, sarcolemma {ECO:0000250|UniProtKB:Q5FW52}; Peripheral membrane protein {ECO:0000250|UniProtKB:Q5FW52}; Cytoplasmic side {ECO:0000250|UniProtKB:Q5FW52}

Tissue Location

Predominantly expressed in the heart and skeletal muscle (PubMed:21498514, PubMed:26436652, PubMed:34581780). Also detected in liver (PubMed:21498514). [Isoform 3]: Expressed in skeletal muscle.

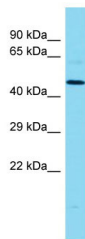
References

Ota T.,et al.Nat. Genet. 36:40-45(2004).

Mungall A.J.,et al.Nature 425:805-811(2003).

Ahmady E.,et al.J. Biol. Chem. 286:19702-19713(2011).

Images



Host: Rabbit

Target Name: MLIP

Sample Tissue: MCF7 Whole cell lysate

S

Antibody Dilution: 1.0µg/ml

Please note: All products are 'FOR RESEARCH USE ONLY. NOT FOR USE IN DIAGNOSTIC OR THERAPEUTIC PROCEDURES'.