

# C15orf23 Antibody - N-terminal region

Rabbit Polyclonal Antibody

Catalog # AI15706

## Product Information

---

|                   |   |
|-------------------|---|
| Application       | WB  |
| Primary Accession | <a href="#">Q9Y448</a>                                |
| Other Accession   | <a href="#">NM_033286</a> , <a href="#">NP_150628</a> |
| Reactivity        | Human   |
| Predicted         | Human   |
| Host              | Rabbit  |
| Clonality         | Polyclonal  |
| Calculated MW     | 35438   |

## Additional Information

---

|                             |   |
|-----------------------------|---|
| Gene ID                     | 90417   |
| Alias Symbol<br>Other Names | SKAP, TRAF4AF1, C15orf23<br>Small kinetochore-associated protein, SKAP, Kinetochore-localized astrin-binding protein, Kinastrin, Kinetochore-localized astrin/SPAG5-binding protein, TRAF4-associated factor 1, KNSTRN ( <a href="#">HGNC:30767</a> ) |
| Format                      | Liquid. Purified antibody supplied in 1x PBS buffer with 0.09% (w/v) sodium azide and 2% sucrose.   |
| Reconstitution & Storage    | Add 50 ul of distilled water. Final anti-C15orf23 antibody concentration is 1 mg/ml in PBS buffer with 2% sucrose. For longer periods of storage, store at 20°C. Avoid repeat freeze-thaw cycles.   |
| Precautions                 | C15orf23 Antibody - N-terminal region is for research use only and not for use in diagnostic or therapeutic procedures.   |

## Protein Information

---

|          |  |
|----------|--|
| Name     | KNSTRN ( <a href="#">HGNC:30767</a> )  |
| Function | Essential component of the mitotic spindle required for faithful chromosome segregation and progression into anaphase (PubMed: <a href="#">19667759</a> ). Promotes the metaphase-to-anaphase transition and is required for chromosome alignment, normal timing of sister chromatid segregation, and maintenance of spindle pole architecture (PubMed: <a href="#">19667759</a> , PubMed: <a href="#">22110139</a> ). The astrin (SPAG5)-kinastrin (SKAP) complex promotes stable microtubule-kinetochore attachments (PubMed: <a href="#">21402792</a> ). Required for kinetochore oscillations and dynamics of microtubule plus-ends during live cell mitosis, possibly by forming a link |

between spindle microtubule plus-ends and mitotic chromosomes to achieve faithful cell division (PubMed:[23035123](#)). May be involved in UV-induced apoptosis via its interaction with PRPF19; however, these results need additional evidences (PubMed:[24718257](#)).

#### Cellular Location

Nucleus. Chromosome, centromere, kinetochore. Cytoplasm, cytoskeleton, spindle pole. Cytoplasm, cytoskeleton, microtubule organizing center. Note=Colocalizes with microtubules around centrosomes in prophase and with the mitotic spindle at prometaphase and metaphase. From late prometaphase to anaphase, is highly concentrated on kinetochores. Located at the kinetochore-microtubule interface. The astrin (SPAG5)-kinastrin (SKAP) complex localizes to the microtubule plus ends (PubMed:23035123)

#### Tissue Location

Widely expressed, including in skin.

## References

---

Cai C.L.,et al.Submitted (JUN-2004) to the EMBL/GenBank/DDBJ databases.

Ota T.,et al.Nat. Genet. 36:40-45(2004).

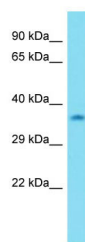
Zody M.C.,et al.Nature 440:671-675(2006).

Li W.B.,et al.Submitted (JUL-2004) to the EMBL/GenBank/DDBJ databases.

Touji S.,et al.Submitted (DEC-1996) to the EMBL/GenBank/DDBJ databases.

## Images

---



Host: Rabbit

Target Name: C15orf23

Sample Tissue: MDA-MB-435S Whole cell lysate

S

Antibody Dilution: 1.0µg/ml

Please note: All products are 'FOR RESEARCH USE ONLY. NOT FOR USE IN DIAGNOSTIC OR THERAPEUTIC PROCEDURES'.