

# CCDC86 Antibody - N-terminal region

Rabbit Polyclonal Antibody

Catalog # AI15584

## Product Information

---

<b>Application</b>	WB
<b>Primary Accession</b>	<a href="#">Q9H6F5</a>
<b>Other Accession</b>	<a href="#">NM_024098</a> , <a href="#">NP_077003</a>
<b>Reactivity</b>	Human, Horse, Bovine
<b>Predicted</b>	Human, Horse, Bovine
<b>Host</b>	Rabbit
<b>Clonality</b>	Polyclonal
<b>Calculated MW</b>	40236

## Additional Information

---

<b>Gene ID</b>	79080
<b>Other Names</b>	Coiled-coil domain-containing protein 86, Cytokine-induced protein with coiled-coil domain, CCDC86, CYCLON
<b>Format</b>	Liquid. Purified antibody supplied in 1x PBS buffer with 0.09% (w/v) sodium azide and 2% sucrose.
<b>Reconstitution &amp; Storage</b>	Add 50 ul of distilled water. Final anti-CCDC86 antibody concentration is 1 mg/ml in PBS buffer with 2% sucrose. For longer periods of storage, store at 20°C. Avoid repeat freeze-thaw cycles.
<b>Precautions</b>	CCDC86 Antibody - N-terminal region is for research use only and not for use in diagnostic or therapeutic procedures.

## Protein Information

---

<b>Name</b>	CCDC86 ( <a href="#">HGNC:28359</a> )
<b>Function</b>	Required for proper chromosome segregation during mitosis and error-free mitotic progression.
<b>Cellular Location</b>	Nucleus. Chromosome. Nucleus, nucleolus. Note=Localized to the nucleolus during the interphase and localized to the perichromosomal layer (also known as chromosome periphery) during mitosis; is particularly enriched at the perichromosomal layer during anaphase. Colocalizes with MKI67 during interphase and mitotic exit.

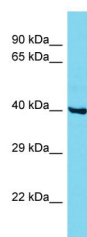
## References

---

Hoshino A.,et al.FEBS Lett. 581:975-980(2007).  
Ota T.,et al.Nat. Genet. 36:40-45(2004).  
Taylor T.D.,et al.Nature 440:497-500(2006).  
Ahn J.,et al.J. Biochem. Mol. Biol. 37:741-748(2004).  
Olsen J.V.,et al.Cell 127:635-648(2006).

## Images

---



Host: Rabbit  
Target Name: CCDC86  
Sample Tissue: MCF7 Whole cell lysate  
S  
Antibody Dilution: 1.0µg/mlCCDC86 is supported by  
BioGPS gene expression data to be expressed in MCF7

Please note: All products are 'FOR RESEARCH USE ONLY. NOT FOR USE IN DIAGNOSTIC OR THERAPEUTIC PROCEDURES'.