

DEF8 Antibody - N-terminal region

Rabbit Polyclonal Antibody

Catalog # AI15489

Product Information

Application	WB
Primary Accession	Q6ZN54
Other Accession	NM_001242817 , NP_001229746
Reactivity	Human, Mouse, Rat, Rabbit, Zebrafish, Pig, Dog, Guinea Pig, Horse, Bovine
Predicted	Human, Mouse, Rat, Rabbit, Zebrafish, Pig, Dog, Guinea Pig, Horse, Bovine
Host	Rabbit
Clonality	Polyclonal
Calculated MW	58710

Additional Information

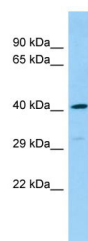
Gene ID	54849
Alias Symbol	FLJ20186, MGC104349
Other Names	Differentially expressed in FDCP 8 homolog, DEF-8, DEF8
Format	Liquid. Purified antibody supplied in 1x PBS buffer with 0.09% (w/v) sodium azide and 2% sucrose.
Reconstitution & Storage	Add 50 ul of distilled water. Final anti-DEF8 antibody concentration is 1 mg/ml in PBS buffer with 2% sucrose. For longer periods of storage, store at 20°C. Avoid repeat freeze-thaw cycles.
Precautions	DEF8 Antibody - N-terminal region is for research use only and not for use in diagnostic or therapeutic procedures.

Protein Information

Name	DEF8
Function	Positively regulates lysosome peripheral distribution and ruffled border formation in osteoclasts. Involved in bone resorption.

Images

Host: Rabbit
Target Name: DEF8
Sample Tissue: Fetal Heart lysates



Antibody Dilution: 1.0µg/ml

Please note: All products are 'FOR RESEARCH USE ONLY. NOT FOR USE IN DIAGNOSTIC OR THERAPEUTIC PROCEDURES'.