

# GPRIN2 Antibody - N-terminal region

Rabbit Polyclonal Antibody

Catalog # AI15433

## Product Information

---

<b>Application</b>	WB
<b>Primary Accession</b>	<a href="#">O60269</a>
<b>Other Accession</b>	<a href="#">NM_014696</a> , <a href="#">NP_055511</a>
<b>Reactivity</b>	Human, Rat, Guinea Pig, Yeast
<b>Predicted</b>	Human, Rat, Pig, Guinea Pig, Yeast
<b>Host</b>	Rabbit
<b>Clonality</b>	Polyclonal
<b>Calculated MW</b>	47450

## Additional Information

---

<b>Gene ID</b>	9721
<b>Alias Symbol</b>	GRIN2, KIAA0514, MGC15171
<b>Other Names</b>	G protein-regulated inducer of neurite outgrowth 2, GRIN2, GPRIN2, KIAA0514
<b>Format</b>	Liquid. Purified antibody supplied in 1x PBS buffer with 0.09% (w/v) sodium azide and 2% sucrose.
<b>Reconstitution &amp; Storage</b>	Add 50 ul of distilled water. Final anti-GPRIN2 antibody concentration is 1 mg/ml in PBS buffer with 2% sucrose. For longer periods of storage, store at 20°C. Avoid repeat freeze-thaw cycles.
<b>Precautions</b>	GPRIN2 Antibody - N-terminal region is for research use only and not for use in diagnostic or therapeutic procedures.

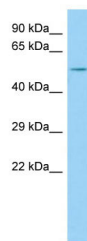
## Protein Information

---

<b>Name</b>	GPRIN2
<b>Synonyms</b>	KIAA0514
<b>Function</b>	May be involved in neurite outgrowth.
<b>Tissue Location</b>	Expressed specifically in the cerebellum.

## Images

---



Host: Rabbit  
Target Name: GPRIN2  
Sample Tissue: MDA-MB-435S Whole cell lysate  
S  
Antibody Dilution: 1.0µg/ml

Please note: All products are 'FOR RESEARCH USE ONLY. NOT FOR USE IN DIAGNOSTIC OR THERAPEUTIC PROCEDURES'.