

CRYGN Antibody - C-terminal region

Rabbit Polyclonal Antibody
Catalog # AI15426

Product Information

Application	WB
Primary Accession	Q8WXF5
Other Accession	NM_144727 , NP_653328
Reactivity	Human
Predicted	Human
Host	Rabbit
Clonality	Polyclonal
Calculated MW	20624

Additional Information

Gene ID	155051
Alias Symbol Other Names	MGC119042, MGC119043, MGC119044, MGC119045 Gamma-crystallin N, Gamma-N-crystallin, CRYGN
Format	Liquid. Purified antibody supplied in 1x PBS buffer with 0.09% (w/v) sodium azide and 2% sucrose.
Reconstitution & Storage	Add 50 ul of distilled water. Final anti-CRYGN antibody concentration is 1 mg/ml in PBS buffer with 2% sucrose. For longer periods of storage, store at 20°C. Avoid repeat freeze-thaw cycles.
Precautions	CRYGN Antibody - C-terminal region is for research use only and not for use in diagnostic or therapeutic procedures.

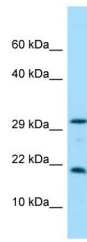
Protein Information

Name	CRYGN (HGNC:20458)
Tissue Location	Not specifically expressed in eye.

References

Wistow G., et al. FEBS J. 272:2276-2291(2005).
Mural R.J., et al. Submitted (SEP-2005) to the EMBL/GenBank/DDBJ databases.

Images



WB Suggested Anti-CRYGN Antibody Titration: 1.0 $\mu\text{g/ml}$
Positive Control: Hela Whole cell

Please note: All products are 'FOR RESEARCH USE ONLY. NOT FOR USE IN DIAGNOSTIC OR THERAPEUTIC PROCEDURES'.