

# COL6A5 Antibody - C-terminal region

Rabbit Polyclonal Antibody  
Catalog # AI15425

## Product Information

---

<b>Application</b>	WB
<b>Primary Accession</b>	<a href="#">A8TX70</a>
<b>Other Accession</b>	<a href="#">NM_153264</a> , <a href="#">NP_694996</a>
<b>Reactivity</b>	Human, Mouse, Rat, Rabbit, Dog, Guinea Pig, Horse, Bovine
<b>Predicted</b>	Human, Mouse, Rat, Rabbit, Pig, Dog, Guinea Pig, Horse, Bovine
<b>Host</b>	Rabbit
<b>Clonality</b>	Polyclonal
<b>Calculated MW</b>	289926

## Additional Information

---

<b>Gene ID</b>	256076
<b>Alias Symbol</b>	COL6A5, FLJ35880, VWA4
<b>Other Names</b>	Collagen alpha-5(VI) chain, Collagen alpha-1(XXIX) chain, von Willebrand factor A domain-containing protein 4, COL6A5, COL29A1, VWA4
<b>Format</b>	Liquid. Purified antibody supplied in 1x PBS buffer with 0.09% (w/v) sodium azide and 2% sucrose.
<b>Reconstitution &amp; Storage</b>	Add 50 ul of distilled water. Final anti-COL6A5 antibody concentration is 1 mg/ml in PBS buffer with 2% sucrose. For longer periods of storage, store at 20°C. Avoid repeat freeze-thaw cycles.
<b>Precautions</b>	COL6A5 Antibody - C-terminal region is for research use only and not for use in diagnostic or therapeutic procedures.

## Protein Information

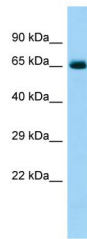
---

<b>Name</b>	COL6A5
<b>Synonyms</b>	COL29A1, VWA4
<b>Function</b>	Collagen VI acts as a cell-binding protein.
<b>Cellular Location</b>	Secreted, extracellular space, extracellular matrix. Note=Deposited in the extracellular matrix of skeletal muscle.
<b>Tissue Location</b>	Expressed in skin, followed by lung, small intestine, colon and testis. In skin, it is expressed in the epidermis with strongest staining in suprabasal viable layers. In ATOD patients, it is absent in the most differentiated upper spinous

and granular layers (at protein level).

## Images

---



Host: Rabbit  
Target Name: COL6A5  
Sample Tissue: Fetal Heart lysates  
Antibody Dilution: 1.0 $\mu$ g/ml

Please note: All products are 'FOR RESEARCH USE ONLY. NOT FOR USE IN DIAGNOSTIC OR THERAPEUTIC PROCEDURES'.