

CAPRIN2 Antibody - N-terminal region

Rabbit Polyclonal Antibody

Catalog # AI15423

Product Information

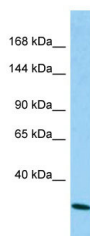
Application	WB
Primary Accession	Q6IMN6-5
Reactivity	Human, Pig, Dog, Horse
Predicted	Human, Dog, Horse
Host	Rabbit
Clonality	Polyclonal
Calculated MW	30 kDa

Additional Information

Format	Liquid. Purified antibody supplied in 1x PBS buffer with 0.09% (w/v) sodium azide and 2% sucrose.
Reconstitution & Storage	Add 50 ul of distilled water. Final anti-CAPRIN2 antibody concentration is 1 mg/ml in PBS buffer with 2% sucrose. For longer periods of storage, store at 20°C. Avoid repeat freeze-thaw cycles.
Precautions	CAPRIN2 Antibody - N-terminal region is for research use only and not for use in diagnostic or therapeutic procedures.

Protein Information

Images



Host: Rabbit
Target Name: CAPRIN2
Sample Tissue: A549 Whole cell lysate
S
Antibody Dilution: 1.0µg/mlCAPRIN2 is supported by BioGPS gene expression data to be expressed in A549

Citations

- [Activation/Proliferation-associated Protein 2 \(Caprin-2\) Positively Regulates CDK14/Cyclin Y-mediated Lipoprotein Receptor-related Protein 5 and 6 \(LRP5/6\) Constitutive Phosphorylation.](#)

Please note: All products are 'FOR RESEARCH USE ONLY. NOT FOR USE IN DIAGNOSTIC OR THERAPEUTIC PROCEDURES'.