

# PPM1H Antibody - N-terminal region

Rabbit Polyclonal Antibody  
Catalog # AI15346

## Product Information

---

|                          |                           |
|--------------------------|---------------------------|
| <b>Application</b>       | WB                        |
| <b>Primary Accession</b> | <a href="#">Q9ULR3</a>    |
| <b>Other Accession</b>   | <a href="#">NP_065751</a> |
| <b>Reactivity</b>        | Human                     |
| <b>Host</b>              | Rabbit                    |
| <b>Clonality</b>         | Polyclonal                |
| <b>Calculated MW</b>     | 56448                     |

## Additional Information

---

|   |  |
|---|--|
| <b>Gene ID</b>                            | 57460  |
| <b>Alias Symbol</b><br><b>Other Names</b> | PPM1H, ARHCL1, KIAA1157, URCC2,<br>Protein phosphatase 1H, 3.1.3.16, PPM1H, ARHCL1, KIAA1157, URCC2  |
| <b>Format</b>                             | Liquid. Purified antibody supplied in 1x PBS buffer with 0.09% (w/v) sodium azide and 2% sucrose.  |
| <b>Reconstitution &amp; Storage</b>       | Add 50 $\mu$ l of distilled water. Final Anti-PPM1H antibody concentration is 1 mg/ml in PBS buffer with 2% sucrose. For longer periods of storage, store at -20°C. Avoid repeat freeze-thaw cycles. |
| <b>Precautions</b>                        | PPM1H Antibody - N-terminal region is for research use only and not for use in diagnostic or therapeutic procedures.   |

## Protein Information

---

|                          |   |
|--------------------------|---|
| <b>Name</b>              | PPM1H   |
| <b>Synonyms</b>          | ARHCL1, KIAA1157, URCC2   |
| <b>Function</b>          | Dephosphorylates CDKN1B at 'Thr-187', thus removing a signal for proteasomal degradation. |
| <b>Cellular Location</b> | Nucleus. Cytoplasm  |

## References

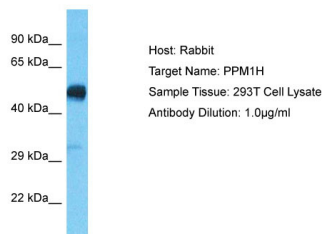
---

Shimokawa T., et al. Submitted (APR-2002) to the EMBL/GenBank/DDBJ databases.

Scherer S.E.,et al.Nature 440:346-351(2006).  
Mural R.J.,et al.Submitted (JUL-2005) to the EMBL/GenBank/DDBJ databases.  
Hirosawa M.,et al.DNA Res. 6:329-336(1999).  
Jia W.,et al.Mol. Cell. Proteomics 8:913-923(2009).

## Images

---



Host: Rabbit  
Target Name: PPM1H  
Sample Tissue: 293T Cell Lysate  
Antibody Dilution: 1.0µg/ml

Host: Rabbit  
Target Name: PPM1H  
Sample Tissue: 293T Whole Cell lysates  
Antibody Dilution: 1.0µg/ml

Please note: All products are 'FOR RESEARCH USE ONLY. NOT FOR USE IN DIAGNOSTIC OR THERAPEUTIC PROCEDURES'.