

GRID2IP Antibody - middle region

Rabbit Polyclonal Antibody

Catalog # AI15300

Product Information

Application	WB
Primary Accession	A4D2P6
Other Accession	NM_001145118 , NP_001138590
Reactivity	Human, Mouse, Rat, Rabbit, Dog, Guinea Pig, Horse, Bovine
Predicted	Human, Mouse, Rat, Rabbit, Pig, Dog, Guinea Pig, Horse, Bovine
Host	Rabbit
Clonality	Polyclonal
Calculated MW	132276

Additional Information

Gene ID	392862
Alias Symbol	DELPHILIN
Other Names	Delphilin, Glutamate receptor, ionotropic, delta 2-interacting protein 1, GRID2IP
Format	Liquid. Purified antibody supplied in 1x PBS buffer with 0.09% (w/v) sodium azide and 2% sucrose.
Reconstitution & Storage	Add 50 ul of distilled water. Final anti-GRID2IP antibody concentration is 1 mg/ml in PBS buffer with 2% sucrose. For longer periods of storage, store at 20°C. Avoid repeat freeze-thaw cycles.
Precautions	GRID2IP Antibody - middle region is for research use only and not for use in diagnostic or therapeutic procedures.

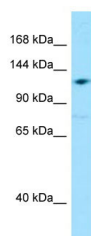
Protein Information

Name	GRID2IP
Function	Postsynaptic scaffolding protein at the parallel fiber- Purkinje cell synapse, where it may serve to link GRID2 with actin cytoskeleton and various signaling molecules.
Cellular Location	Postsynaptic cell membrane.

References

Hillier L.W.,et al.Nature 424:157-164(2003).
Scherer S.W.,et al.Science 300:767-772(2003).
Katoh M.,et al.Int. J. Mol. Med. 12:1015-1019(2003).
Matsuda K.,et al.J. Biol. Chem. 281:25577-25587(2006).

Images



WB Suggested Anti-GRID2IP Antibody Titration: 1.0 µg/ml
Positive Control: HepG2 Whole Cell

Please note: All products are 'FOR RESEARCH USE ONLY. NOT FOR USE IN DIAGNOSTIC OR THERAPEUTIC PROCEDURES'.