

MOB1A Antibody - C-terminal region

Rabbit Polyclonal Antibody

Catalog # AI15257

Product Information

Application	WB
Primary Accession	Q9H8S9
Other Accession	NM_018221 , NP_060691
Reactivity	Human, Mouse, Rat, Rabbit, Zebrafish, Pig, Dog, Guinea Pig, Horse, Bovine
Predicted	Human, Mouse, Rat, Rabbit, Zebrafish, Pig, Dog, Guinea Pig, Horse, Bovine
Host	Rabbit
Clonality	Polyclonal
Calculated MW	25080

Additional Information

Gene ID	55233
Alias Symbol Other Names	C2orf6, FLJ10788, FLJ11595, MATS1, MOB1, MOBK1B, Mob4B, MOBKL1B MOB kinase activator 1A, Mob1 alpha, Mob1A, Mob1 homolog 1B, Mps one binder kinase activator-like 1B, MOB1A, C2orf6, MOB4B, MOBK1B, MOBKL1B
Format	Liquid. Purified antibody supplied in 1x PBS buffer with 0.09% (w/v) sodium azide and 2% sucrose.
Reconstitution & Storage	Add 50 ul of distilled water. Final anti-MOB1A antibody concentration is 1 mg/ml in PBS buffer with 2% sucrose. For longer periods of storage, store at 20°C. Avoid repeat freeze-thaw cycles.
Precautions	MOB1A Antibody - C-terminal region is for research use only and not for use in diagnostic or therapeutic procedures.

Protein Information

Name	MOB1A (HGNC:16015)
Function	Activator of LATS1/2 in the Hippo signaling pathway which plays a pivotal role in organ size control and tumor suppression by restricting proliferation and promoting apoptosis. The core of this pathway is composed of a kinase cascade wherein STK3/MST2 and STK4/MST1, in complex with its regulatory protein SAV1, phosphorylates and activates LATS1/2 in complex with its regulatory protein MOB1, which in turn phosphorylates and inactivates YAP1 oncoprotein and WWTR1/TAZ. Phosphorylation of YAP1 by LATS1/2 inhibits its translocation into the nucleus to regulate cellular genes important for cell proliferation, cell death, and cell migration. Stimulates the kinase activity of STK38 and STK38L. Acts cooperatively with STK3/MST2 to activate STK38.

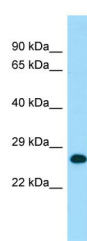
Tissue Location

Adrenal gland, bone marrow, brain, placenta, prostate, salivary gland, skeletal muscle, testis, thymus, thyroid gland, heart, spinal cord, fetal brain and fetal liver

References

Kagaya S.,et al.Submitted (AUG-1998) to the EMBL/GenBank/DDBJ databases.
Florindo C.S.,et al.Submitted (JUL-2003) to the EMBL/GenBank/DDBJ databases.
Ota T.,et al.Nat. Genet. 36:40-45(2004).
Hillier L.W.,et al.Nature 434:724-731(2005).
Gevaert K.,et al.Nat. Biotechnol. 21:566-569(2003).

Images



WB Suggested Anti-MOB1A Antibody Titration: 1.0 µg/ml
Positive Control: Fetal Heart

Please note: All products are 'FOR RESEARCH USE ONLY. NOT FOR USE IN DIAGNOSTIC OR THERAPEUTIC PROCEDURES'.