

NANS antibody - middle region

Rabbit Polyclonal Antibody

Catalog # AI15219

Product Information

Application	WB
Primary Accession	Q9NR45
Other Accession	NM_018946 , NP_061819
Reactivity	Human, Mouse, Rat, Rabbit, Zebrafish, Pig, Dog, Guinea Pig, Horse, Bovine
Predicted	Human, Mouse, Rat, Rabbit, Zebrafish, Pig, Dog, Guinea Pig, Horse, Bovine
Host	Rabbit
Clonality	Polyclonal
Calculated MW	40 KDa

Additional Information

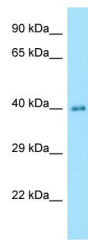
Alias Symbol	SAS
Other Names	Sialic acid synthase, N-acetylneuraminase synthase, 2.5.1.56, N-acetylneuraminase-9-phosphate synthase, 2.5.1.57, N-acetylneuraminic acid phosphate synthase, N-acetylneuraminic acid synthase, NANS, SAS
Format	Liquid. Purified antibody supplied in 1x PBS buffer with 0.09% (w/v) sodium azide and 2% sucrose.
Reconstitution & Storage	Add 50 ul of distilled water. Final anti-NANS antibody concentration is 1 mg/ml in PBS buffer with 2% sucrose. For longer periods of storage, store at 20°C. Avoid repeat freeze-thaw cycles.
Precautions	NANS antibody - middle region is for research use only and not for use in diagnostic or therapeutic procedures.

Protein Information

References

- Lawrence S.M., et al. *Biol. Chem.* 275:17869-17877(2000).
Ota T., et al. *Nat. Genet.* 36:40-45(2004).
Humphray S.J., et al. *Nature* 429:369-374(2004).
Mural R.J., et al. Submitted (JUL-2005) to the EMBL/GenBank/DBJ databases.
Bienvenut W.V., et al. Submitted (JAN-2010) to UniProtKB.

Images



Host: Rabbit
Target Name: NANS
Antibody Dilution: 1.0 μ g/ml
Sample Tissue: Human Lung

Please note: All products are 'FOR RESEARCH USE ONLY. NOT FOR USE IN DIAGNOSTIC OR THERAPEUTIC PROCEDURES'.