

# LILRA3 Antibody - C-terminal region

Rabbit Polyclonal Antibody

Catalog # AI15215

## Product Information

---

<b>Application</b>	WB
<b>Primary Accession</b>	<a href="#">Q8N6C8</a>
<b>Other Accession</b>	<a href="#">NM_006865</a> , <a href="#">NP_006856</a>
<b>Reactivity</b>	Human, Bovine
<b>Predicted</b>	Human, Bovine
<b>Host</b>	Rabbit
<b>Clonality</b>	Polyclonal
<b>Calculated MW</b>	47472

## Additional Information

---

<b>Gene ID</b>	11026
<b>Alias Symbol</b> <b>Other Names</b>	CD85E, HM31, HM43, ILT6, LIR-4, LIR4, e3 Leukocyte immunoglobulin-like receptor subfamily A member 3, CD85 antigen-like family member E, Immunoglobulin-like transcript 6, ILT-6, Leukocyte immunoglobulin-like receptor 4, LIR-4, Monocyte inhibitory receptor HM43/HM31, CD85e, LILRA3, ILT6, LIR4
<b>Format</b>	Liquid. Purified antibody supplied in 1x PBS buffer with 0.09% (w/v) sodium azide and 2% sucrose.
<b>Reconstitution &amp; Storage</b>	Add 50 ul of distilled water. Final anti-LILRA3 antibody concentration is 1 mg/ml in PBS buffer with 2% sucrose. For longer periods of storage, store at 20°C. Avoid repeat freeze-thaw cycles.
<b>Precautions</b>	LILRA3 Antibody - C-terminal region is for research use only and not for use in diagnostic or therapeutic procedures.

## Protein Information

---

<b>Name</b>	LILRA3
<b>Synonyms</b>	ILT6, LIR4
<b>Function</b>	Acts as a soluble receptor for class I MHC antigens. Binds both classical and non-classical HLA class I molecules but with reduced affinities compared to LILRB1 or LILRB2. Binds with high affinity to the surface of monocytes, leading to abolish LPS-induced TNF-alpha production by monocytes.
<b>Cellular Location</b>	Secreted.

## Tissue Location

Detected in B-cells, and at lower levels in natural killer (NK) cells. Detected in peripheral blood monocytes and lung

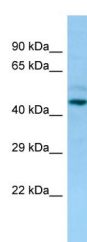
## References

---

Arm J.P.,et al.J. Immunol. 159:2342-2349(1997).  
Borges L.,et al.J. Immunol. 159:5192-5196(1997).  
Samaridis J.,et al.Eur. J. Immunol. 27:660-665(1997).  
Grimwood J.,et al.Nature 428:529-535(2004).  
Norman P.J.,et al.Immunogenetics 55:165-171(2003).

## Images

---



WB Suggested Anti-LILRA3 Antibody Titration: 1.0 µg/ml  
Positive Control: OVCAR-3 Whole Cell  
LILRA3 is supported by BioGPS gene expression data to be expressed in OVCAR3

Please note: All products are 'FOR RESEARCH USE ONLY. NOT FOR USE IN DIAGNOSTIC OR THERAPEUTIC PROCEDURES'.