

# DPYSL4 antibody - C-terminal region

Rabbit Polyclonal Antibody

Catalog # AI15211

## Product Information

---

<b>Application</b>	WB
<b>Primary Accession</b>	<a href="#">O14531</a>
<b>Other Accession</b>	<a href="#">NM_006426</a> , <a href="#">NP_006417</a>
<b>Reactivity</b>	Human, Mouse, Rat, Rabbit, Zebrafish, Pig, Dog, Guinea Pig, Horse, Bovine
<b>Predicted</b>	Human, Mouse, Rat, Rabbit, Zebrafish, Pig, Dog, Guinea Pig, Horse, Bovine
<b>Host</b>	Rabbit
<b>Clonality</b>	Polyclonal
<b>Calculated MW</b>	61878

## Additional Information

---

<b>Gene ID</b>	10570
<b>Alias Symbol</b>	CRMP3, DRP-4, ULIP4
<b>Other Names</b>	Dihydropyrimidinase-related protein 4, DRP-4, Collapsin response mediator protein 3, CRMP-3, UNC33-like phosphoprotein 4, ULIP-4, DPYSL4, CRMP3, ULIP4
<b>Format</b>	Liquid. Purified antibody supplied in 1x PBS buffer with 0.09% (w/v) sodium azide and 2% sucrose.
<b>Reconstitution &amp; Storage</b>	Add 50 ul of distilled water. Final anti-DPYSL4 antibody concentration is 1 mg/ml in PBS buffer with 2% sucrose. For longer periods of storage, store at 20°C. Avoid repeat freeze-thaw cycles.
<b>Precautions</b>	DPYSL4 antibody - C-terminal region is for research use only and not for use in diagnostic or therapeutic procedures.

## Protein Information

---

<b>Name</b>	DPYSL4
<b>Synonyms</b>	CRMP3, ULIP4
<b>Function</b>	Necessary for signaling by class 3 semaphorins and subsequent remodeling of the cytoskeleton. Plays a role in axon guidance, neuronal growth cone collapse and cell migration (By similarity).
<b>Cellular Location</b>	Cytoplasm.

## References

---

Hamajima N.,et al.Submitted (AUG-1997) to the EMBL/GenBank/DDBJ databases.

Deloukas P.,et al.Nature 429:375-381(2004).

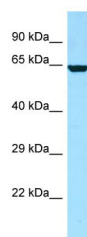
Mural R.J.,et al.Submitted (SEP-2005) to the EMBL/GenBank/DDBJ databases.

Byk T.,et al.Eur. J. Biochem. 254:14-24(1998).

Lubec G.,et al.Submitted (JAN-2009) to UniProtKB.

## Images

---



Host: Rabbit

Target Name: DPYSL4

Antibody Dilution: 1.0µg/ml

Sample Tissue: 721\_B cell lysate

DPYSL4 is strongly supported by BioGPS gene expression data to be expressed in Human 721\_B cells

Please note: All products are 'FOR RESEARCH USE ONLY. NOT FOR USE IN DIAGNOSTIC OR THERAPEUTIC PROCEDURES'.