

CD300C Antibody - C-terminal region

Rabbit Polyclonal Antibody

Catalog # AI15203

Product Information

Application	WB
Primary Accession	Q08708
Other Accession	NM_006678 , NP_006669
Reactivity	Human
Predicted	Human
Host	Rabbit
Clonality	Polyclonal
Calculated MW	24830

Additional Information

Gene ID	10871
Alias Symbol Other Names	CMRF-35A, CMRF35, CMRF35A, CMRF35A1, IGSF16, LIR CMRF35-like molecule 6, CLM-6, CD300 antigen-like family member C, CMRF35-A1, CMRF-35, Immunoglobulin superfamily member 16, IgSF16, CD300c, CD300C, CMRF35, CMRF35A, CMRF35A1, IGSF16
Format	Liquid. Purified antibody supplied in 1x PBS buffer with 0.09% (w/v) sodium azide and 2% sucrose.
Reconstitution & Storage	Add 50 ul of distilled water. Final anti-CD300C antibody concentration is 1 mg/ml in PBS buffer with 2% sucrose. For longer periods of storage, store at 20°C. Avoid repeat freeze-thaw cycles.
Precautions	CD300C Antibody - C-terminal region is for research use only and not for use in diagnostic or therapeutic procedures.

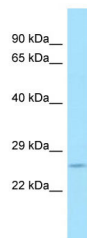
Protein Information

Name	CD300C
Synonyms	CMRF35, CMRF35A, CMRF35A1, IGSF16
Cellular Location	Cell membrane; Single-pass type I membrane protein
Tissue Location	Present on the surface of monocytes, neutrophils, a proportion of peripheral blood T- and B-lymphocytes and lymphocytic cell lines

References

Jackson D.G.,et al.Eur. J. Immunol. 22:1157-1163(1992).
Clark G.J.,et al.Tissue Antigens 57:415-423(2001).
Speckman R.A.,et al.Hum. Genet. 112:34-41(2003).

Images



WB Suggested Anti-CD300C Antibody Titration: 1.0 µg/ml
Positive Control: 721_B Whole Cell

Please note: All products are 'FOR RESEARCH USE ONLY. NOT FOR USE IN DIAGNOSTIC OR THERAPEUTIC PROCEDURES'.