

INHBC antibody - N-terminal region

Rabbit Polyclonal Antibody

Catalog # AI15177

Product Information

Application	WB
Primary Accession	P55103
Other Accession	NM_005538 , NP_005529
Reactivity	Human, Horse
Predicted	Human, Horse
Host	Rabbit
Clonality	Polyclonal
Calculated MW	38238

Additional Information

Gene ID	3626
Alias Symbol	IHBC
Other Names	Inhibin beta C chain, Activin beta-C chain, INHBC
Format	Liquid. Purified antibody supplied in 1x PBS buffer with 0.09% (w/v) sodium azide and 2% sucrose.
Reconstitution & Storage	Add 50 ul of distilled water. Final anti-INHBC antibody concentration is 1 mg/ml in PBS buffer with 2% sucrose. For longer periods of storage, store at 20°C. Avoid repeat freeze-thaw cycles.
Precautions	INHBC antibody - N-terminal region is for research use only and not for use in diagnostic or therapeutic procedures.

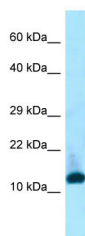
Protein Information

Name	INHBC
Function	Inhibins and activins inhibit and activate, respectively, the secretion of follitropin by the pituitary gland. Inhibins/activins are involved in regulating a number of diverse functions such as hypothalamic and pituitary hormone secretion, gonadal hormone secretion, germ cell development and maturation, erythroid differentiation, insulin secretion, nerve cell survival, embryonic axial development or bone growth, depending on their subunit composition. Inhibins appear to oppose the functions of activins.
Cellular Location	Secreted.
Tissue Location	Expressed in benign prostatic hyperplasia.

References

Hoetten G.,et al.Biochem. Biophys. Res. Commun. 206:608-613(1995).
Mural R.J.,et al.Submitted (JUL-2005) to the EMBL/GenBank/DDBJ databases.
Thomas T.Z.,et al.Prostate 34:34-43(1998).

Images



Host: Rabbit
Target Name: INHBC
Antibody Dilution: 1.0µg/ml
Sample Tissue: OVCAR-3 cell lysate
INHBC is supported by BioGPS gene expression data to
be expressed in OVCAR3

Please note: All products are 'FOR RESEARCH USE ONLY. NOT FOR USE IN DIAGNOSTIC OR THERAPEUTIC PROCEDURES'.