

RGP1 Antibody - middle region

Rabbit Polyclonal Antibody

Catalog # AI15173

Product Information

Application	WB
Primary Accession	Q92546
Other Accession	NM_001080496 , NP_001073965
Reactivity	Human, Mouse, Rat, Rabbit, Pig, Dog, Guinea Pig, Horse, Bovine
Predicted	Human, Mouse, Rat, Rabbit, Pig, Dog, Guinea Pig, Horse, Bovine
Host	Rabbit
Clonality	Polyclonal
Calculated MW	42455

Additional Information

Gene ID	9827
Alias Symbol	KIAA0258
Other Names	RAB6A-GEF complex partner protein 2, Retrograde Golgi transport protein RGP1 homolog, RGP1 (HGNC:21965), KIAA0258
Format	Liquid. Purified antibody supplied in 1x PBS buffer with 0.09% (w/v) sodium azide and 2% sucrose.
Reconstitution & Storage	Add 50 µl of distilled water. Final Anti-RGP1 antibody concentration is 1 mg/ml in PBS buffer with 2% sucrose. For longer periods of storage, store at -20°C. Avoid repeat freeze-thaw cycles.
Precautions	RGP1 Antibody - middle region is for research use only and not for use in diagnostic or therapeutic procedures.

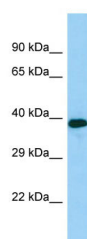
Protein Information

Name	RGP1 (HGNC:21965)
Synonyms	KIAA0258
Function	The RIC1-RGP1 complex acts as a guanine nucleotide exchange factor (GEF), which activates RAB6A by exchanging bound GDP for free GTP and may thereby required for efficient fusion of endosome-derived vesicles with the Golgi compartment. The RIC1-RGP1 complex participates in the recycling of mannose-6-phosphate receptors.
Cellular Location	Cytoplasm, cytosol. Membrane

References

Nagase T.,et al.DNA Res. 3:321-329(1996).
Humphray S.J.,et al.Nature 429:369-374(2004).
Mural R.J.,et al.Submitted (SEP-2005) to the EMBL/GenBank/DDBJ databases.
Pusapati G.V.,et al.J. Biol. Chem. 287:42129-42137(2012).
Van Damme P.,et al.Proc. Natl. Acad. Sci. U.S.A. 109:12449-12454(2012).

Images



Host: Rabbit
Target Name: RGP1
Sample Tissue: HepG2 Whole cell lysate
S
Antibody Dilution: 1.0µg/ml

Please note: All products are 'FOR RESEARCH USE ONLY. NOT FOR USE IN DIAGNOSTIC OR THERAPEUTIC PROCEDURES'.