

RXFP4 antibody - C-terminal region

Rabbit Polyclonal Antibody

Catalog # AI15165

Product Information

Application	WB
Primary Accession	Q8TDU9
Other Accession	NM_181885 , NP_871001
Reactivity	Human, Pig
Predicted	Human, Pig
Host	Rabbit
Clonality	Polyclonal
Calculated MW	41141

Additional Information

Gene ID	339403
Alias Symbol Other Names	GPCR142, GPR100, MGC126556, MGC126558, RLN3R2, RXFPR4 Relaxin-3 receptor 2, RLN3 receptor 2, G-protein coupled receptor 100, G-protein coupled receptor GPCR142, Insulin-like peptide INSL5 receptor, Relaxin family peptide receptor 4, RXFP4, GPR100, RLN3R2
Format	Liquid. Purified antibody supplied in 1x PBS buffer with 0.09% (w/v) sodium azide and 2% sucrose.
Reconstitution & Storage	Add 50 ul of distilled water. Final anti-RXFP4 antibody concentration is 1 mg/ml in PBS buffer with 2% sucrose. For longer periods of storage, store at 20°C. Avoid repeat freeze-thaw cycles.
Precautions	RXFP4 antibody - C-terminal region is for research use only and not for use in diagnostic or therapeutic procedures.

Protein Information

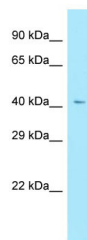
Name	RXFP4
Synonyms	GPCR142, GPR100, RLN3R2
Function	High affinity receptor for INSL5. Also acts as a receptor for RLN3/relaxin-3, as well as bradykinin and kallidin. Binding of the ligand inhibit cAMP accumulation.
Cellular Location	Cell membrane; Multi-pass membrane protein.
Tissue Location	Expressed in a broader range of tissues including brain, kidney, testis,

thymus, placenta, prostate, salivary gland, thyroid and colon.

References

Liu C.,et al.J. Biol. Chem. 278:50765-50770(2003).
Fredriksson R.,et al.FEBS Lett. 554:381-388(2003).
Boels K.,et al.Br. J. Pharmacol. 140:932-938(2003).
Suwa M.,et al.Submitted (JUL-2001) to the EMBL/GenBank/DDBJ databases.
Takeda S.,et al.FEBS Lett. 520:97-101(2002).

Images



WB Suggested Anti-RXFP4 Antibody Titration: 1.0 µg/ml
Positive Control: Fetal Lung

Please note: All products are 'FOR RESEARCH USE ONLY. NOT FOR USE IN DIAGNOSTIC OR THERAPEUTIC PROCEDURES'.