

PACS1 antibody - C-terminal region

Rabbit Polyclonal Antibody

Catalog # AI15159

Product Information

Application	WB
Primary Accession	Q6VY07
Other Accession	NM_018026 , AAH09936
Reactivity	Human, Mouse, Rat, Rabbit, Zebrafish, Pig, Dog, Guinea Pig, Horse, Bovine
Predicted	Human, Mouse, Rat, Rabbit, Zebrafish, Pig, Dog, Guinea Pig, Horse, Bovine
Host	Rabbit
Clonality	Polyclonal
Calculated MW	104898

Additional Information

Gene ID	55690
Other Names	Phosphofurin acidic cluster sorting protein 1, PACS-1, PACS1, KIAA1175
Format	Liquid. Purified antibody supplied in 1x PBS buffer with 0.09% (w/v) sodium azide and 2% sucrose.
Reconstitution & Storage	Add 50 ul of distilled water. Final anti-PACS1 antibody concentration is 1 mg/ml in PBS buffer with 2% sucrose. For longer periods of storage, store at 20°C. Avoid repeat freeze-thaw cycles.
Precautions	PACS1 antibody - C-terminal region is for research use only and not for use in diagnostic or therapeutic procedures.

Protein Information

Name	PACS1
Synonyms	KIAA1175
Function	Coat protein that is involved in the localization of trans- Golgi network (TGN) membrane proteins that contain acidic cluster sorting motifs. Controls the endosome-to-Golgi trafficking of furin and mannose-6-phosphate receptor by connecting the acidic-cluster- containing cytoplasmic domain of these molecules with the adapter- protein complex-1 (AP-1) of endosomal clathrin-coated membrane pits. Involved in HIV-1 nef-mediated removal of MHC-I from the cell surface to the TGN. Required for normal ER Ca ²⁺ handling in lymphocytes. Together with WDR37, it plays an essential role in lymphocyte development, quiescence and survival. Required for stabilizing peripheral lymphocyte populations (By similarity).

Cellular Location

Golgi apparatus, trans-Golgi network {ECO:0000250|UniProtKB:O88588}.
Note=Localizes in the perinuclear region, probably the TGN.

References

Wan L.,et al.Submitted (JUN-2003) to the EMBL/GenBank/DDBJ databases.

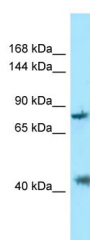
Ota T.,et al.Nat. Genet. 36:40-45(2004).

Hirosawa M.,et al.DNA Res. 6:329-336(1999).

Crump C.M.,et al.EMBO J. 20:2191-2201(2001).

Piguet V.,et al.Nat. Cell Biol. 2:163-167(2000).

Images



WB Suggested Anti-PACS1 Antibody Titration: 1.0 µg/ml
Positive Control: Placenta

Please note: All products are 'FOR RESEARCH USE ONLY. NOT FOR USE IN DIAGNOSTIC OR THERAPEUTIC PROCEDURES'.