

# Dpysl5 Antibody - C-terminal region

Rabbit Polyclonal Antibody

Catalog # AI15084

## Product Information

---

<b>Application</b>	WB
<b>Primary Accession</b>	<a href="#">Q9EQF6</a>
<b>Other Accession</b>	<a href="#">NM_023047</a> , <a href="#">NP_075534</a>
<b>Reactivity</b>	Human, Mouse, Rat, Rabbit, Zebrafish, Pig, Dog, Guinea Pig, Horse, Bovine
<b>Predicted</b>	Human, Mouse, Rat, Rabbit, Zebrafish, Pig, Dog, Guinea Pig, Horse, Bovine
<b>Host</b>	Rabbit
<b>Clonality</b>	Polyclonal
<b>Calculated MW</b>	61516

## Additional Information

---

<b>Gene ID</b>	65254
<b>Alias Symbol</b>	CRAM, CRMP-5, Crmp5
<b>Other Names</b>	Dihydropyrimidinase-related protein 5, DRP-5, Collapsin response mediator protein 5, CRMP-5, Dpysl5, Crmp5
<b>Format</b>	Liquid. Purified antibody supplied in 1x PBS buffer with 0.09% (w/v) sodium azide and 2% sucrose.
<b>Reconstitution &amp; Storage</b>	Add 50 ul of distilled water. Final anti-Dpysl5 antibody concentration is 1 mg/ml in PBS buffer with 2% sucrose. For longer periods of storage, store at 20°C. Avoid repeat freeze-thaw cycles.
<b>Precautions</b>	Dpysl5 Antibody - C-terminal region is for research use only and not for use in diagnostic or therapeutic procedures.

## Protein Information

---

<b>Name</b>	Dpysl5
<b>Synonyms</b>	Crmp5
<b>Function</b>	Involved in the negative regulation of dendrite outgrowth.
<b>Cellular Location</b>	Cytoplasm. Note=Translocates into the mitochondria upon interaction with SEPTIN4 isoform 4
<b>Tissue Location</b>	Detected in brain..

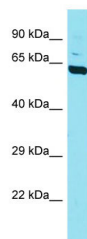
## References

---

Fukada M.,et al.J. Biol. Chem. 275:37957-37965(2000).  
Takahashi S.,et al.Genes Cells 8:81-93(2003).

## Images

---



Host: Rabbit  
Target Name: Dpysl5  
Sample Tissue: Mouse Brain lysates  
Antibody Dilution: 1.0µg/ml

Please note: All products are 'FOR RESEARCH USE ONLY. NOT FOR USE IN DIAGNOSTIC OR THERAPEUTIC PROCEDURES'.