

SPAM1 Antibody - middle region

Rabbit Polyclonal Antibody

Catalog # AI15082

Product Information

Application	WB
Primary Accession	P38567
Other Accession	NP_694859
Reactivity	Human
Host	Rabbit
Clonality	Polyclonal
Calculated MW	57848

Additional Information

Gene ID	6677
Alias Symbol Other Names	SPAM1, HYAL3, PH20, Hyaluronidase PH-20, Hyal-PH20, 3.2.1.35, Hyaluronoglucosaminidase PH-20, Sperm adhesion molecule 1, Sperm surface protein PH-20, SPAM1, HYAL3, PH20
Format	Liquid. Purified antibody supplied in 1x PBS buffer with 0.09% (w/v) sodium azide and 2% sucrose.
Reconstitution & Storage	Add 50 μ l of distilled water. Final Anti-SPAM1 antibody concentration is 1 mg/ml in PBS buffer with 2% sucrose. For longer periods of storage, store at -20°C. Avoid repeat freeze-thaw cycles.
Precautions	SPAM1 Antibody - middle region is for research use only and not for use in diagnostic or therapeutic procedures.

Protein Information

Name	SPAM1
Synonyms	HYAL3, PH20
Function	Involved in sperm-egg adhesion. Upon fertilization sperm must first penetrate a layer of cumulus cells that surrounds the egg before reaching the zona pellucida. The cumulus cells are embedded in a matrix containing hyaluronic acid which is formed prior to ovulation. This protein aids in penetrating the layer of cumulus cells by digesting hyaluronic acid.
Cellular Location	Cell membrane; Lipid-anchor, GPI-anchor.

References

Lin Y.,et al.Proc. Natl. Acad. Sci. U.S.A. 90:10071-10075(1993).

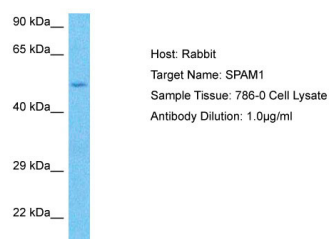
Gmachl M.,et al.FEBS Lett. 336:545-548(1993).

Jones M.H.,et al.Genomics 29:796-800(1995).

Hillier L.W.,et al.Nature 424:157-164(2003).

Scherer S.W.,et al.Science 300:767-772(2003).

Images



Host: Rabbit

Target Name: SPAM1

Sample Tissue: 786-0 Whole Cell lysates

Antibody Dilution: 1.0µg/ml

Please note: All products are 'FOR RESEARCH USE ONLY. NOT FOR USE IN DIAGNOSTIC OR THERAPEUTIC PROCEDURES'.