

# BCMO1 antibody - C-terminal region

Rabbit Polyclonal Antibody  
Catalog # AI15065

## Product Information

---

<b>Application</b>	WB
<b>Primary Accession</b>	<a href="#">Q9HAY6</a>
<b>Other Accession</b>	<a href="#">NM_017429</a> , <a href="#">NP_059125</a>
<b>Reactivity</b>	Human
<b>Predicted</b>	Human
<b>Host</b>	Rabbit
<b>Clonality</b>	Polyclonal
<b>Calculated MW</b>	63 KDa

## Additional Information

---

<b>Alias Symbol</b>	BCDO, BCDO1, BCMO, BCO, BCO1, FLJ10730
<b>Other Names</b>	Beta, beta-carotene 15, 15'-monooxygenase, 1.14.99.36, Beta-carotene dioxygenase 1, Beta-carotene oxygenase 1 {ECO:0000312 HGNC:HGNC:13815}, BCO1 ( <a href="#">HGNC:13815</a> )
<b>Format</b>	Liquid. Purified antibody supplied in 1x PBS buffer with 0.09% (w/v) sodium azide and 2% sucrose.
<b>Reconstitution &amp; Storage</b>	Add 50 ul of distilled water. Final anti-BCMO1 antibody concentration is 1 mg/ml in PBS buffer with 2% sucrose. For longer periods of storage, store at 20°C. Avoid repeat freeze-thaw cycles.
<b>Precautions</b>	BCMO1 antibody - C-terminal region is for research use only and not for use in diagnostic or therapeutic procedures.

## Protein Information

---

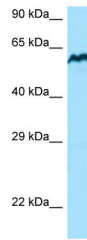
### References

---

Yan W., et al. Genomics 72:193-202(2001).  
Ota T., et al. Nat. Genet. 36:40-45(2004).  
Mural R.J., et al. Submitted (SEP-2005) to the EMBL/GenBank/DDBJ databases.  
Lindqvist A., et al. J. Nutr. 137:2346-2350(2007).

### Images

---



Host: Rabbit

Target Name: BCMO1

Sample Tissue: A549 cell lysate

S

Antibody Dilution: 1.0µg/ml BCMO1 is supported by BioGPS gene expression data to be expressed in A549

Please note: All products are 'FOR RESEARCH USE ONLY. NOT FOR USE IN DIAGNOSTIC OR THERAPEUTIC PROCEDURES'.