

ARTN antibody - middle region

Rabbit Polyclonal Antibody

Catalog # AI15037

Product Information

Application	WB
Primary Accession	Q5T4W7
Other Accession	NM_057090 , NP_476431
Reactivity	Human
Predicted	Human
Host	Rabbit
Clonality	Polyclonal
Calculated MW	22878

Additional Information

Gene ID	9048
Alias Symbol	ENOVIN, EVN, NBN
Other Names	Artemin, Enovin, Neublastin, ARTN, EVN
Format	Liquid. Purified antibody supplied in 1x PBS buffer with 0.09% (w/v) sodium azide and 2% sucrose.
Reconstitution & Storage	Add 50 ul of distilled water. Final anti-ARTN antibody concentration is 1 mg/ml in PBS buffer with 2% sucrose. For longer periods of storage, store at 20°C. Avoid repeat freeze-thaw cycles.
Precautions	ARTN antibody - middle region is for research use only and not for use in diagnostic or therapeutic procedures.

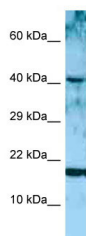
Protein Information

Name	ARTN {ECO:0000303 PubMed:9883723, ECO:0000312 HGNC:HGNC:727}
Function	Growth factor that supports the survival of sensory and sympathetic peripheral neurons in culture and also supports the survival of dopaminergic neurons of the ventral mid-brain (PubMed: 10583383 , PubMed: 9883723). Acts by binding to its coreceptor, GFRA3, leading to autophosphorylation and activation of the RET receptor (PubMed: 31535977). Strong attractant of gut hematopoietic cells thus promoting the formation Peyer's patch-like structures, a major component of the gut-associated lymphoid tissue (By similarity).
Cellular Location	Secreted.

Tissue Location

Ubiquitous. Expressed at high levels in peripheral tissues including prostate, placenta, pancreas, heart, kidney, pituitary gland, lung and testis. Expressed at low levels in the brain

Images



WB Suggested Anti-ARTN Antibody Titration: 1.0 µg/ml
Positive Control: MCF7 Whole Cell

Please note: All products are 'FOR RESEARCH USE ONLY. NOT FOR USE IN DIAGNOSTIC OR THERAPEUTIC PROCEDURES'.