

LILRB2 antibody - C-terminal region

Rabbit Polyclonal Antibody

Catalog # AI15036

Product Information

Application	WB
Primary Accession	Q8N423
Other Accession	NM_005874 , NP_005865
Reactivity	Human
Predicted	Human
Host	Rabbit
Clonality	Polyclonal
Calculated MW	65005

Additional Information

Gene ID	10288
Alias Symbol Other Names	CD85D, ILT4, LILRA6, LIR-2, LIR2, MIR-10, MIR10 Leukocyte immunoglobulin-like receptor subfamily B member 2, LIR-2, Leukocyte immunoglobulin-like receptor 2, CD85 antigen-like family member D, Immunoglobulin-like transcript 4, ILT-4, Monocyte/macrophage immunoglobulin-like receptor 10, MIR-10, CD85d, LILRB2, ILT4, LIR2, MIR10
Format	Liquid. Purified antibody supplied in 1x PBS buffer with 0.09% (w/v) sodium azide and 2% sucrose.
Reconstitution & Storage	Add 50 ul of distilled water. Final anti-LILRB2 antibody concentration is 1 mg/ml in PBS buffer with 2% sucrose. For longer periods of storage, store at 20°C. Avoid repeat freeze-thaw cycles.
Precautions	LILRB2 antibody - C-terminal region is for research use only and not for use in diagnostic or therapeutic procedures.

Protein Information

Name	LILRB2 (HGNC:6606)
Function	Receptor for class I MHC antigens. Recognizes a broad spectrum of HLA-A, HLA-B, HLA-C, HLA-G and HLA-F alleles (PubMed: 11169396 , PubMed: 12853576 , PubMed: 16455647 , PubMed: 20448110 , PubMed: 27859042). Involved in the down-regulation of the immune response and the development of tolerance. Recognizes HLA-G in complex with B2M/beta-2 microglobulin and a nonamer self-peptide (peptide-bound HLA-G-B2M) triggering differentiation of type 1 regulatory T cells and myeloid-derived suppressor cells, both of which actively maintain

maternal-fetal tolerance (PubMed:[16455647](#), PubMed:[20448110](#), PubMed:[27859042](#)). Competes with CD8A for binding to class I MHC antigens. Inhibits FCGR1A-mediated phosphorylation of cellular proteins and mobilization of intracellular calcium ions (PubMed:[11875462](#), PubMed:[12853576](#), PubMed:[9548455](#), PubMed:[9842885](#)).

Cellular Location

Cell membrane; Single-pass type I membrane protein

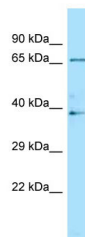
Tissue Location

Expressed in monocytes and at lower levels in myeloid and plasmacytoid dendritic cells. Expressed in tolerogenic IL10-producing dendritic cells (PubMed:20448110). Expressed in myeloid- derived suppressor cells during pregnancy (PubMed:27859042). Detected at low levels in natural killer (NK) cells. Expressed in B cells

References

Colonna M.,et al.J. Exp. Med. 186:1809-1818(1997).
Borges L.,et al.J. Immunol. 159:5192-5196(1997).
Canavez F.C.,et al.Submitted (JUL-2000) to the EMBL/GenBank/DDBJ databases.
Grimwood J.,et al.Nature 428:529-535(2004).
Fanger N.A.,et al.Eur. J. Immunol. 28:3423-3434(1998).

Images



WB Suggested Anti-LILRB2 Antibody Titration: 1.0 µg/ml
Positive Control: Fetal Brain

Please note: All products are 'FOR RESEARCH USE ONLY. NOT FOR USE IN DIAGNOSTIC OR THERAPEUTIC PROCEDURES'.