

GDAP1 antibody - middle region

Rabbit Polyclonal Antibody

Catalog # AI15033

Product Information

Application	WB
Primary Accession	Q8TB36
Other Accession	NM_018972 , NP_061845
Reactivity	Human, Mouse, Rat, Rabbit, Zebrafish, Pig, Dog, Guinea Pig, Horse, Bovine
Predicted	Human, Mouse, Rat, Rabbit, Zebrafish, Pig, Dog, Guinea Pig, Horse, Bovine
Host	Rabbit
Clonality	Polyclonal
Calculated MW	41346

Additional Information

Gene ID	54332
Alias Symbol	CMTRIA, CMT4, CMT4A
Other Names	Ganglioside-induced differentiation-associated protein 1, GDAP1, GDAP1
Format	Liquid. Purified antibody supplied in 1x PBS buffer with 0.09% (w/v) sodium azide and 2% sucrose.
Reconstitution & Storage	Add 50 ul of distilled water. Final anti-GDAP1 antibody concentration is 1 mg/ml in PBS buffer with 2% sucrose. For longer periods of storage, store at 20°C. Avoid repeat freeze-thaw cycles.
Precautions	GDAP1 antibody - middle region is for research use only and not for use in diagnostic or therapeutic procedures.

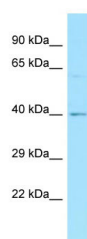
Protein Information

Name	GDAP1
Function	Regulates the mitochondrial network by promoting mitochondrial fission.
Cellular Location	Mitochondrion outer membrane; Multi-pass membrane protein. Cytoplasm {ECO:0000250 UniProtKB:O88741}
Tissue Location	Highly expressed in whole brain and spinal cord. Predominant expression in central tissues of the nervous system not only in neurons but also in Schwann cells

References

Liu H.,et al.J. Neurochem. 72:1781-1790(1999).
Crimella C.,et al.J. Med. Genet. 47:712-716(2010).
Ota T.,et al.Nat. Genet. 36:40-45(2004).
Nusbaum C.,et al.Nature 439:331-335(2006).
Cuesta A.,et al.Nat. Genet. 30:22-25(2002).

Images



WB Suggested Anti-GDAP1 Antibody Titration: 1.0 µg/ml
Positive Control: ACHN Whole Cell

Please note: All products are 'FOR RESEARCH USE ONLY. NOT FOR USE IN DIAGNOSTIC OR THERAPEUTIC PROCEDURES'.