

# GDAP1 antibody - C-terminal region

Rabbit Polyclonal Antibody

Catalog # AI15032

## Product Information

---

<b>Application</b>	WB
<b>Primary Accession</b>	<a href="#">Q8TB36</a>
<b>Other Accession</b>	<a href="#">NM_001040875</a> , <a href="#">NP_001035808</a>
<b>Reactivity</b>	Human, Mouse, Rat, Rabbit, Zebrafish, Pig, Dog, Guinea Pig, Horse, Bovine
<b>Predicted</b>	Human, Mouse, Rat, Zebrafish, Pig, Chicken, Dog, Guinea Pig, Horse, Bovine
<b>Host</b>	Rabbit
<b>Clonality</b>	Polyclonal
<b>Calculated MW</b>	41346

## Additional Information

---

<b>Gene ID</b>	54332
<b>Alias Symbol</b>	CMTRIA, CMT4, CMT4A
<b>Other Names</b>	Ganglioside-induced differentiation-associated protein 1, GDAP1, GDAP1
<b>Format</b>	Liquid. Purified antibody supplied in 1x PBS buffer with 0.09% (w/v) sodium azide and 2% sucrose.
<b>Reconstitution &amp; Storage</b>	Add 50 ul of distilled water. Final anti-GDAP1 antibody concentration is 1 mg/ml in PBS buffer with 2% sucrose. For longer periods of storage, store at 20°C. Avoid repeat freeze-thaw cycles.
<b>Precautions</b>	GDAP1 antibody - C-terminal region is for research use only and not for use in diagnostic or therapeutic procedures.

## Protein Information

---

<b>Name</b>	GDAP1
<b>Function</b>	Regulates the mitochondrial network by promoting mitochondrial fission.
<b>Cellular Location</b>	Mitochondrion outer membrane; Multi-pass membrane protein. Cytoplasm {ECO:0000250 UniProtKB:O88741}
<b>Tissue Location</b>	Highly expressed in whole brain and spinal cord. Predominant expression in central tissues of the nervous system not only in neurons but also in Schwann cells

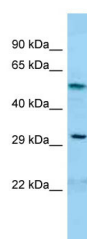
## References

---

Liu H.,et al.J. Neurochem. 72:1781-1790(1999).  
Crimella C.,et al.J. Med. Genet. 47:712-716(2010).  
Ota T.,et al.Nat. Genet. 36:40-45(2004).  
Nusbaum C.,et al.Nature 439:331-335(2006).  
Cuesta A.,et al.Nat. Genet. 30:22-25(2002).

## Images

---



WB Suggested Anti-GDAP1 Antibody Titration: 1.0 µg/ml  
Positive Control: OVCAR-3 Whole Cell

Please note: All products are 'FOR RESEARCH USE ONLY. NOT FOR USE IN DIAGNOSTIC OR THERAPEUTIC PROCEDURES'.