

# HSPA1B antibody - C-terminal region

Rabbit Polyclonal Antibody

Catalog # AI15029

## Product Information

---

<b>Application</b>	WB
<b>Primary Accession</b>	<a href="#">P08107</a>
<b>Other Accession</b>	<a href="#">NM_005346</a> , <a href="#">NP_005337</a>
<b>Reactivity</b>	Human, Mouse, Rat, Rabbit, Zebrafish, Pig, Goat, Dog, Guinea Pig, Horse, Bovine, Sheep
<b>Predicted</b>	Human, Mouse, Rat, Rabbit, Zebrafish, Pig, Goat, Dog, Guinea Pig, Horse, Bovine, Sheep
<b>Host</b>	Rabbit
<b>Clonality</b>	Polyclonal
<b>Calculated MW</b>	70 kDa

## Additional Information

---

<b>Alias Symbol</b>	FLJ54328, HSP70-1B, HSP70-2, HSPA1A
<b>Other Names</b>	Heat shock 70 kDa protein 1A/1B, Heat shock 70 kDa protein 1/2, HSP70-1/HSP70-2, HSP70.1/HSP70.2, HSPA1A, HSPA1, HSX70
<b>Format</b>	Liquid. Purified antibody supplied in 1x PBS buffer with 0.09% (w/v) sodium azide and 2% sucrose.
<b>Reconstitution &amp; Storage</b>	Add 50 ul of distilled water. Final anti-HSPA1B antibody concentration is 1 mg/ml in PBS buffer with 2% sucrose. For longer periods of storage, store at 20°C. Avoid repeat freeze-thaw cycles.
<b>Precautions</b>	HSPA1B antibody - C-terminal region is for research use only and not for use in diagnostic or therapeutic procedures.

## Protein Information

---

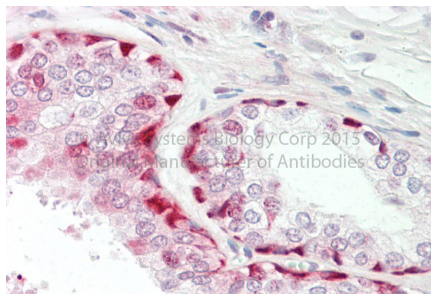
## References

---

Milner C.M., et al. Immunogenetics 32:242-251(1990).  
Hunt C., et al. Proc. Natl. Acad. Sci. U.S.A. 82:6455-6459(1985).  
Xie T., et al. Genome Res. 13:2621-2636(2003).  
Shiina S., et al. Submitted (SEP-1999) to the EMBL/GenBank/DDBJ databases.  
Ota T., et al. Nat. Genet. 36:40-45(2004).

## Images

---



Rabbit Anti-HSPA1B antibody Catalog Number: ARP63869  
 Formalin Fixed Paraffin Embedded Tissue: Human Adult  
 Prostate Observed Staining: Cytoplasm in hepatocytes  
 Primary Antibody Concentration: 1:600 Secondary  
 Antibody: Donkey anti-Rabbit-Cy3 Secondary Antibody  
 Concentration: 1:200 Magnification: 20X Exposure Time:  
 0.5 sec



WB Suggested Anti-HSPA1B Antibody Titration: 1.0 µg/ml  
 Positive Control: MDA-MB-435S Whole Cell  
 HSPA1B is strongly supported by BioGPS gene expression data to be  
 expressed in Human MDA-MB435 cells

Please note: All products are 'FOR RESEARCH USE ONLY. NOT FOR USE IN DIAGNOSTIC OR THERAPEUTIC PROCEDURES'.