

# CFI antibody - N-terminal region

Rabbit Polyclonal Antibody

Catalog # AI14937

## Product Information

---

<b>Application</b>	WB
<b>Primary Accession</b>	<a href="#">P05156</a>
<b>Other Accession</b>	<a href="#">NM_000204</a> , <a href="#">NP_000195</a>
<b>Reactivity</b>	Human
<b>Predicted</b>	Human
<b>Host</b>	Rabbit
<b>Clonality</b>	Polyclonal
<b>Calculated MW</b>	65750

## Additional Information

---

<b>Gene ID</b>	3426
<b>Alias Symbol</b>	AHUS3, C3BINA, C3b-INA, FI, IF, KAF
<b>Other Names</b>	Complement factor I, 3.4.21.45, C3B/C4B inactivator, Complement factor I heavy chain, Complement factor I light chain, CFI, IF
<b>Format</b>	Liquid. Purified antibody supplied in 1x PBS buffer with 0.09% (w/v) sodium azide and 2% sucrose.
<b>Reconstitution &amp; Storage</b>	Add 50 ul of distilled water. Final anti-CFI antibody concentration is 1 mg/ml in PBS buffer with 2% sucrose. For longer periods of storage, store at 20°C. Avoid repeat freeze-thaw cycles.
<b>Precautions</b>	CFI antibody - N-terminal region is for research use only and not for use in diagnostic or therapeutic procedures.

## Protein Information

---

<b>Name</b>	CFI
<b>Synonyms</b>	IF
<b>Function</b>	Trypsin-like serine protease that plays an essential role in regulating the immune response by controlling all complement pathways. Inhibits these pathways by cleaving three peptide bonds in the alpha- chain of C3b and two bonds in the alpha-chain of C4b thereby inactivating these proteins (PubMed: <a href="#">17320177</a> , PubMed: <a href="#">7360115</a> ). Essential cofactors for these reactions include factor H and C4BP in the fluid phase and membrane cofactor protein/CD46 and CR1 on cell surfaces (PubMed: <a href="#">12055245</a> , PubMed: <a href="#">2141838</a> , PubMed: <a href="#">9605165</a> ). The presence of these cofactors on healthy cells allows

degradation of deposited C3b by CFI in order to prevent undesired complement activation, while in apoptotic cells or microbes, the absence of such cofactors leads to C3b-mediated complement activation and subsequent opsonization (PubMed:[28671664](#)).

**Cellular Location**

Secreted, extracellular space. Secreted

**Tissue Location**

Expressed in the liver by hepatocytes (PubMed:6327681). Also present in other cells such as monocytes, fibroblasts or keratinocytes (PubMed:17320177, PubMed:6444659)

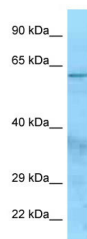
## References

---

Catterall C.F.,et al.Biochem. J. 242:849-856(1987).  
Goldberger G.,et al.J. Biol. Chem. 262:10065-10071(1987).  
Hillier L.W.,et al.Nature 434:724-731(2005).  
Minta J.O.,et al.Gene 208:17-24(1998).  
Ullman C.G.,et al.FEBS Lett. 371:199-203(1995).

## Images

---



WB Suggested Anti-CFI Antibody Titration: 1.0 µg/ml  
Positive Control: Hela Whole Cell

Please note: All products are 'FOR RESEARCH USE ONLY. NOT FOR USE IN DIAGNOSTIC OR THERAPEUTIC PROCEDURES'.