

ZFP62 antibody - C-terminal region

Rabbit Polyclonal Antibody

Catalog # AI14921

Product Information

Application	WB
Primary Accession	Q8NB50
Other Accession	NM_152283 , NP_689496
Reactivity	Human, Rabbit, Bovine
Predicted	Human, Bovine
Host	Rabbit
Clonality	Polyclonal
Calculated MW	102511

Additional Information

Gene ID	643836
Alias Symbol	DKFZp667F2013, FLJ11344, FLJ34057, FLJ34231, FLJ58781, FLJ59694, MGC176438, ZET, ZNF755
Other Names	Zinc finger protein 62 homolog, Zfp-62, ZFP62
Target/Specificity	Recognizes both isoforms of human ZFP62.
Format	Liquid. Purified antibody supplied in 1x PBS buffer with 0.09% (w/v) sodium azide and 2% sucrose.
Reconstitution & Storage	Add 50 ul of distilled water. Final anti-ZFP62 antibody concentration is 1 mg/ml in PBS buffer with 2% sucrose. For longer periods of storage, store at 20°C. Avoid repeat freeze-thaw cycles.
Precautions	ZFP62 antibody - C-terminal region is for research use only and not for use in diagnostic or therapeutic procedures.

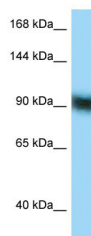
Protein Information

Name	ZFP62
Function	May play a role in differentiating skeletal muscle.
Cellular Location	Nucleus.

References

Ota T.,et al.Nat. Genet. 36:40-45(2004).
Schmutz J.,et al.Nature 431:268-274(2004).
Bechtel S.,et al.BMC Genomics 8:399-399(2007).

Images



WB Suggested Anti-ZFP62 Antibody Titration: 1.0 µg/ml
Positive Control: RPMI-8226 Whole Cell

Please note: All products are 'FOR RESEARCH USE ONLY. NOT FOR USE IN DIAGNOSTIC OR THERAPEUTIC PROCEDURES'.