

TBC1D20 antibody - C-terminal region

Rabbit Polyclonal Antibody

Catalog # AI14857

Product Information

| | |
|--------------------------|--|
| Application | WB |
| Primary Accession | Q96BZ9 |
| Other Accession | NM_144628 , NP_653229 |
| Reactivity | Human, Mouse, Rat, Rabbit, Pig, Dog, Guinea Pig, Horse, Bovine |
| Predicted | Human, Mouse, Rat, Rabbit, Pig, Dog, Guinea Pig, Horse |
| Host | Rabbit |
| Clonality | Polyclonal |
| Calculated MW | 45855 |

Additional Information

| | |
|-------------------------------------|--|
| Gene ID | 128637 |
| Alias Symbol | C20orf140, FLJ45119 |
| Other Names | TBC1 domain family member 20, TBC1D20, C20orf140 |
| Format | Liquid. Purified antibody supplied in 1x PBS buffer with 0.09% (w/v) sodium azide and 2% sucrose. |
| Reconstitution & Storage | Add 50 ul of distilled water. Final anti-TBC1D20 antibody concentration is 1 mg/ml in PBS buffer with 2% sucrose. For longer periods of storage, store at 20°C. Avoid repeat freeze-thaw cycles. |
| Precautions | TBC1D20 antibody - C-terminal region is for research use only and not for use in diagnostic or therapeutic procedures. |

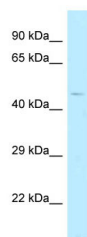
Protein Information

| | |
|--------------------------|--|
| Name | TBC1D20 (HGNC:16133) |
| Synonyms | C20orf140 |
| Function | GTPase-activating protein (GAP) specific for Rab1 and Rab2 small GTPase families for which it can accelerate the intrinsic GTP hydrolysis rate by more than five orders of magnitude (PubMed: 23236136). Also shows GAP activity for RAB18 GTPase (PubMed: 26063829). Promotes RAB18 dissociation from the endoplasmic reticulum (ER) membrane into the cytosol, probably through stimulating RAB18 GTP-hydrolysis (PubMed: 26063829). Involved in maintaining endoplasmic reticulum structure (PubMed: 24891604). |
| Cellular Location | Membrane; Multi-pass membrane protein |

References

Ishibashi K.,et al.Genes Cells 14:41-52(2009).
Ota T.,et al.Nat. Genet. 36:40-45(2004).
Deloukas P.,et al.Nature 414:865-871(2001).
Mural R.J.,et al.Submitted (SEP-2005) to the EMBL/GenBank/DDBJ databases.
Sklan E.H.,et al.J. Virol. 81:11096-11105(2007).

Images



WB Suggested Anti-TBC1D20 Antibody Titration: 1.0 µg/ml
Positive Control: Fetal Heart

Please note: All products are 'FOR RESEARCH USE ONLY. NOT FOR USE IN DIAGNOSTIC OR THERAPEUTIC PROCEDURES'.