

CFHR1 antibody - N-terminal region

Rabbit Polyclonal Antibody

Catalog # AI14800

Product Information

Application	WB
Primary Accession	Q03591
Other Accession	NM_002113 , NP_002104
Reactivity	Human, Rat
Predicted	Human
Host	Rabbit
Clonality	Polyclonal
Calculated MW	37651

Additional Information

Gene ID	3078
Alias Symbol Other Names	CFHL, CFHL1, CFHL1P, CFHR1P, FHR1, H36-1, H36-2, HFL1, HFL2, MGC104329 Complement factor H-related protein 1, FHR-1, H factor-like protein 1, H-factor-like 1, H36, CFHR1, CFHL, CFHL1, CFHL1P, CFHR1P, FHR1, HFL1, HFL2
Format	Liquid. Purified antibody supplied in 1x PBS buffer with 0.09% (w/v) sodium azide and 2% sucrose.
Reconstitution & Storage	Add 50 ul of distilled water. Final anti-CFHR1 antibody concentration is 1 mg/ml in PBS buffer with 2% sucrose. For longer periods of storage, store at 20°C. Avoid repeat freeze-thaw cycles.
Precautions	CFHR1 antibody - N-terminal region is for research use only and not for use in diagnostic or therapeutic procedures.

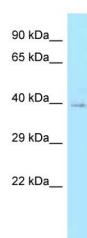
Protein Information

Name	CFHR1
Synonyms	CFHL, CFHL1, CFHL1P, CFHR1P, FHR1, HFL1,
Function	Involved in complement regulation. The dimerized forms have avidity for tissue-bound complement fragments and efficiently compete with the physiological complement inhibitor CFH. Can associate with lipoproteins and may play a role in lipid metabolism.
Cellular Location	Secreted.
Tissue Location	Expressed by the liver and secreted in plasma.

References

Estaller C.,et al.J. Immunol. 146:3190-3196(1991).
Male D.A.,et al.Mol. Immunol. 37:41-52(2000).
Ota T.,et al.Nat. Genet. 36:40-45(2004).
Gregory S.G.,et al.Nature 441:315-321(2006).
Skerka C.,et al.J. Biol. Chem. 266:12015-12020(1991).

Images



WB Suggested Anti-CFHR1 Antibody Titration: 1.0 µg/ml
Positive Control: Hela Whole Cell

Please note: All products are 'FOR RESEARCH USE ONLY. NOT FOR USE IN DIAGNOSTIC OR THERAPEUTIC PROCEDURES'.