

FGFRL1 Antibody - middle region

Rabbit Polyclonal Antibody

Catalog # AI14720

Product Information

Application	WB
Primary Accession	Q8N441
Other Accession	XP_005272339
Reactivity	Human
Host	Rabbit
Clonality	Polyclonal
Calculated MW	54537

Additional Information

Gene ID	53834
Alias Symbol Other Names	FGFRL1, FGFR5, FHFR, UNQ480/PRO943, Fibroblast growth factor receptor-like 1, FGF receptor-like protein 1, FGF homologous factor receptor, FGFR-like protein, Fibroblast growth factor receptor 5, FGFR-5, FGFRL1, FGFR5, FHFR
Format	Liquid. Purified antibody supplied in 1x PBS buffer with 0.09% (w/v) sodium azide and 2% sucrose.
Reconstitution & Storage	Add 50 µl of distilled water. Final Anti-FGFRL1 antibody concentration is 1 mg/ml in PBS buffer with 2% sucrose. For longer periods of storage, store at -20°C. Avoid repeat freeze-thaw cycles.
Precautions	FGFRL1 Antibody - middle region is for research use only and not for use in diagnostic or therapeutic procedures.

Protein Information

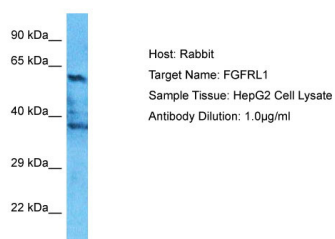
Name	FGFRL1
Synonyms	FGFR5, FHFR
Function	Has a negative effect on cell proliferation.
Cellular Location	Membrane; Single- pass type I membrane protein Note=Predominantly localized in the plasma membrane but also detected in the Golgi and in secretory vesicles
Tissue Location	Expressed preferentially in cartilaginous tissues and pancreas. Highly expressed in the liver, kidney, heart, brain and skeletal muscle. Weakly

expressed in the lung, small intestine and spleen.

References

Wiedemann M.,et al.Genomics 69:275-279(2000).
Kim I.,et al.Biochim. Biophys. Acta 1518:152-156(2001).
Aggarwal S.,et al.Submitted (OCT-2000) to the EMBL/GenBank/DDBJ databases.
Clark H.F.,et al.Genome Res. 13:2265-2270(2003).
Ota T.,et al.Nat. Genet. 36:40-45(2004).

Images



Host: Rabbit
Target Name: FGFR1
Sample Tissue: HepG2 Whole cell lysate
S
Antibody Dilution: 1.0µg/ml

Please note: All products are 'FOR RESEARCH USE ONLY. NOT FOR USE IN DIAGNOSTIC OR THERAPEUTIC PROCEDURES'.