

IFIT1 Antibody - C-terminal region

Rabbit Polyclonal Antibody

Catalog # AI14695

Product Information

Application	WB
Primary Accession	P09914
Other Accession	NM_001548 , NP_001539
Reactivity	Human
Predicted	Human
Host	Rabbit
Clonality	Polyclonal
Calculated MW	55360

Additional Information

Gene ID	3434
Alias Symbol Other Names	C56, G10P1, GARG-16, IFI-56, IFI56, IFNAI1, ISG56, RNM561 Interferon-induced protein with tetratricopeptide repeats 1, IFIT-1, Interferon-induced 56 kDa protein, IFI-56K, P56, IFIT1, G10P1, IFI56, IFNAI1, ISG56
Format	Liquid. Purified antibody supplied in 1x PBS buffer with 0.09% (w/v) sodium azide and 2% sucrose.
Reconstitution & Storage	Add 50 ul of distilled water. Final anti-IFIT1 antibody concentration is 1 mg/ml in PBS buffer with 2% sucrose. For longer periods of storage, store at 20°C. Avoid repeat freeze-thaw cycles.
Precautions	IFIT1 Antibody - C-terminal region is for research use only and not for use in diagnostic or therapeutic procedures.

Protein Information

Name	IFIT1 (HGNC:5407)
Function	Plays a key role in the innate immune response as part of an interferon-dependent multiprotein complex, recognizing and sequestering viral RNAs that lack host-specific 2'-O-methylation at their 5' cap. By distinguishing these RNAs from host mRNAs, inhibits their translation by competing with the translation initiation factor eIF4E (PubMed: 21642987 , PubMed: 27240734 , PubMed: 39009378 , PubMed: 23334420 , PubMed: 28251928 , PubMed: 36285486). Could also prevent viral replication through its interaction with DNA replication origin-binding protein E1 of several viruses. Causes the translocation of E1 from the nucleus to the

cytoplasm and can also inhibit its helicase activity in vitro (PubMed:[19008854](#), PubMed:[21976647](#)). Exhibits antiviral activity against many viruses from the Flaviviridae (West Nile virus, Dengue virus, hepatitis C virus), Coronaviridae (human 229E coronavirus, SARS-CoV-2 and SARS-CoV), Poxviridae (vaccinia virus) and Togaviridae (Sindbis virus) families (PubMed:[19008854](#), PubMed:[21976647](#), PubMed:[28251928](#), PubMed:[36285486](#)).

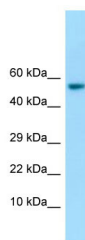
Cellular Location

Cytoplasm

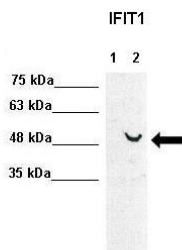
References

Wathelet M.,et al.Eur. J. Biochem. 155:11-17(1986).
Kalnina N.,et al.Submitted (MAY-2003) to the EMBL/GenBank/DDBJ databases.
Ota T.,et al.Nat. Genet. 36:40-45(2004).
Deloukas P.,et al.Nature 429:375-381(2004).
Mural R.J.,et al.Submitted (SEP-2005) to the EMBL/GenBank/DDBJ databases.

Images



WB Suggested Anti-IFIT1 Antibody Titration: 1.0 µg/ml
Positive Control: Fetal Stomach



WB Suggested Anti-IFIT1 Antibody
Positive Control: Lane1: 30ug human Huh7, Lane2: 30ug human Huh7+IFNB stimulated
Primary Antibody Dilution : 1:1000
Secondary Antibody : Anti-rabbit-HRP
Secondary Antibody Dilution : 1:5000
Submitted by: Takeshi Saito, USC Keck School of Medicine

Please note: All products are 'FOR RESEARCH USE ONLY. NOT FOR USE IN DIAGNOSTIC OR THERAPEUTIC PROCEDURES'.