

# ABI2 Antibody - N-terminal region

Rabbit Polyclonal Antibody

Catalog # AI14672

## Product Information

<b>Application</b>	WB
<b>Primary Accession</b>	<a href="#">Q9NYB9</a>
<b>Other Accession</b>	<a href="#">NM_005759</a> , <a href="#">NP_005750</a>
<b>Reactivity</b>	Human, Mouse, Rat, Rabbit, Zebrafish, Dog, Guinea Pig, Horse, Bovine, Yeast
<b>Predicted</b>	Human, Mouse, Rat, Rabbit, Zebrafish, Pig, Dog, Guinea Pig, Horse, Bovine, Yeast
<b>Host</b>	Rabbit
<b>Clonality</b>	Polyclonal
<b>Calculated MW</b>	55663

## Additional Information

<b>Gene ID</b>	10152
<b>Alias Symbol</b>	ABI-2, ABI2B, AIP-1, AblBP3, SSH3BP2, argBP1A, argBP1B
<b>Other Names</b>	Abl interactor 2, Abelson interactor 2, Abi-2, Abl-binding protein 3, AblBP3, Arg-binding protein 1, ArgBP1, ABI2, ARGBP1A
<b>Format</b>	Liquid. Purified antibody supplied in 1x PBS buffer with 0.09% (w/v) sodium azide and 2% sucrose.
<b>Reconstitution &amp; Storage</b>	Add 50 ul of distilled water. Final anti-ABI2 antibody concentration is 1 mg/ml in PBS buffer with 2% sucrose. For longer periods of storage, store at 20°C. Avoid repeat freeze-thaw cycles.
<b>Precautions</b>	ABI2 Antibody - N-terminal region is for research use only and not for use in diagnostic or therapeutic procedures.

## Protein Information

<b>Name</b>	ABI2 {ECO:0000303   PubMed:28397838, ECO:0000312   HGNC:HGNC:24011}
<b>Function</b>	Regulator of actin cytoskeleton dynamics underlying cell motility and adhesion. Functions as a component of the WAVE complex, which activates actin nucleating machinery Arp2/3 to drive lamellipodia formation (PubMed: <a href="#">21107423</a> ). Acts as a regulator and substrate of nonreceptor tyrosine kinases ABL1 and ABL2 involved in processes linked to cell growth and differentiation. Positively regulates ABL1-mediated phosphorylation of ENAH, which is required for proper polymerization of nucleated actin filaments at the leading edge (PubMed: <a href="#">10498863</a> , PubMed: <a href="#">7590236</a> , PubMed: <a href="#">8649853</a> ). Contributes to the regulation of actin assembly at the tips

of neuron projections. In particular, controls dendritic spine morphogenesis and may promote dendritic spine specification toward large mushroom-type spines known as repositories of memory in the brain (By similarity). In hippocampal neurons, may mediate actin-dependent BDNF-NTRK2 early endocytic trafficking that triggers dendrite outgrowth (By similarity). Participates in ocular lens morphogenesis, likely by regulating lamellipodia-driven adherens junction formation at the epithelial cell-secondary lens fiber interface (By similarity). Also required for nascent adherens junction assembly in epithelial cells (PubMed:[15572692](#)).

**Cellular Location**

Cytoplasm. Nucleus

**Tissue Location**

Widely expressed. Abundant in testes, ovary, thymus, and colon, with lower but detectable levels in prostate, peripheral blood leukocytes, and spleen.

## References

---

Dai Z.,et al.Genes Dev. 9:2569-2582(1995).

Ren R.,et al.Submitted (JUL-1995) to the EMBL/GenBank/DDBJ databases.

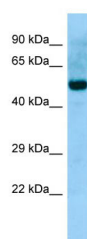
Wang B.,et al.Oncogene 12:1921-1929(1996).

Kalnine N.,et al.Submitted (AUG-2003) to the EMBL/GenBank/DDBJ databases.

Ota T.,et al.Nat. Genet. 36:40-45(2004).

## Images

---



WB Suggested Anti-ABI2 Antibody Titration: 1.0 µg/ml  
Positive Control: Fetal Stomach

Please note: All products are 'FOR RESEARCH USE ONLY. NOT FOR USE IN DIAGNOSTIC OR THERAPEUTIC PROCEDURES'.