

Dhh Antibody - N-terminal region

Rabbit Polyclonal Antibody
Catalog # AI14670

Product Information

Application	WB
Primary Accession	Q61488
Other Accession	NM_007857 , NP_031883
Reactivity	Human, Mouse, Rat, Rabbit, Zebrafish, Pig, Goat, Dog, Guinea Pig, Horse, Bovine, Sheep
Predicted	Human, Mouse, Rat, Rabbit, Zebrafish, Pig, Goat, Dog, Guinea Pig, Horse, Bovine, Sheep
Host	Rabbit
Clonality	Polyclonal
Calculated MW	43542

Additional Information

Gene ID	13363
Alias Symbol	C78960
Other Names	Desert hedgehog protein, DHH, HHG-3, Desert hedgehog protein N-product, Desert hedgehog protein C-product, Dhh
Format	Liquid. Purified antibody supplied in 1x PBS buffer with 0.09% (w/v) sodium azide and 2% sucrose.
Reconstitution & Storage	Add 50 ul of distilled water. Final anti-Dhh antibody concentration is 1 mg/ml in PBS buffer with 2% sucrose. For longer periods of storage, store at 20°C. Avoid repeat freeze-thaw cycles.
Precautions	Dhh Antibody - N-terminal region is for research use only and not for use in diagnostic or therapeutic procedures.

Protein Information

Name	Dhh {ECO:0000312 MGI:MGI:94891}
Function	[Desert hedgehog protein]: The C-terminal part of the desert hedgehog protein precursor displays an autoproteolysis and a cholesterol transferase activity (By similarity). Both activities result in the cleavage of the full-length protein into two parts (N- product and C-product) followed by the covalent attachment of a cholesterol moiety to the C-terminal of the newly generated N-product (DHH-N) (By similarity). Both activities occur in the endoplasmic reticulum (By similarity). Once cleaved, the C-product is degraded in the endoplasmic reticulum (By similarity). Functions in cell-cell mediated juxtacrine signaling (By similarity). Promotes endothelium integrity

(PubMed:[33063110](#)). Binds to PTCH1 receptor, which functions in association with smoothened (SMO), to activate the transcription of target genes in endothelial cells (PubMed:[33063110](#)). In Schwann cells, controls the development of the peripheral nerve sheath and the transition of mesenchymal cells to form the epithelium-like structure of the perineurial tube (PubMed:[10482238](#)).

Cellular Location

[Desert hedgehog protein N-product]: Cell membrane
{ECO:0000250|UniProtKB:Q62226}; Lipid-anchor
{ECO:0000250|UniProtKB:Q62226}

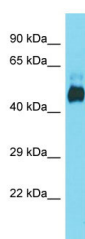
Tissue Location

Expressed in adult testes (PubMed:8805249). Not expressed in limb buds.

References

Echelard Y.,et al.Cell 75:1417-1430(1993).
Lubec G.,et al.Submitted (JAN-2009) to UniProtKB.
Chang D.T.,et al.Development 120:3339-3353(1994).

Images



Host: Rabbit
Target Name: Dhh
Sample Tissue: Mouse Kidney lysates
Antibody Dilution: 1.0µg/ml

Please note: All products are 'FOR RESEARCH USE ONLY. NOT FOR USE IN DIAGNOSTIC OR THERAPEUTIC PROCEDURES'.