

Entpd1 antibody - N-terminal region

Rabbit Polyclonal Antibody

Catalog # AI14644

Product Information

Application	WB
Primary Accession	P55772
Other Accession	NM_009848 , NP_033978
Reactivity	Human, Mouse, Rat, Rabbit, Zebrafish, Pig, Dog, Guinea Pig, Horse, Bovine
Predicted	Human, Mouse, Rabbit, Zebrafish, Pig, Chicken, Dog, Horse, Bovine
Host	Rabbit
Clonality	Polyclonal
Calculated MW	57205

Additional Information

Gene ID	12495
Alias Symbol Other Names	2610206B08Rik, AA408691, Cd39, NTPDase-1 Ectonucleoside triphosphate diphosphohydrolase 1, NTPDase 1, 3.6.1.5, Ecto-ATP diphosphohydrolase 1, Ecto-ATPDase 1, Ecto-ATPase 1, Ecto-apyrase, Lymphoid cell activation antigen, CD39, Entpd1, Cd39
Format	Liquid. Purified antibody supplied in 1x PBS buffer with 0.09% (w/v) sodium azide and 2% sucrose.
Reconstitution & Storage	Add 50 ul of distilled water. Final anti-Entpd1 antibody concentration is 1 mg/ml in PBS buffer with 2% sucrose. For longer periods of storage, store at 20°C. Avoid repeat freeze-thaw cycles.
Precautions	Entpd1 antibody - N-terminal region is for research use only and not for use in diagnostic or therapeutic procedures.

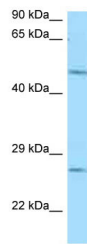
Protein Information

Name	Entpd1 {ECO:0000312 MGI:MGI:102805}
Function	Catalyzes the hydrolysis of both di- and triphosphate nucleotides (NDPs and NTPs) and hydrolyze NTPs to nucleotide monophosphates (NMPs) in two distinct successive phosphate-releasing steps, with NDPs as intermediates and participates in the regulation of extracellular levels of nucleotides. By hydrolyzing proinflammatory ATP and platelet-activating ADP to AMP, it blocks platelet aggregation and supports blood flow.
Cellular Location	Membrane {ECO:0000250 UniProtKB:P49961}; Multi- pass membrane protein {ECO:0000250 UniProtKB:P49961}. Membrane, caveola

References

Maliszewski C.R.,et al.J. Immunol. 153:3574-3583(1994).
Schoenborn M.A.,et al.Cytogenet. Cell Genet. 81:287-289(1998).

Images



WB Suggested Anti-Entpd1 Antibody Titration: 1.0 µg/ml
Positive Control: Mouse Heart

Please note: All products are 'FOR RESEARCH USE ONLY. NOT FOR USE IN DIAGNOSTIC OR THERAPEUTIC PROCEDURES'.