

F11 antibody - C-terminal region

Rabbit Polyclonal Antibody

Catalog # AI14606

Product Information

Application	WB
Primary Accession	P03951
Other Accession	NM_000128 , NP_000119
Reactivity	Human, Mouse, Rat, Rabbit, Dog, Guinea Pig, Horse, Bovine
Predicted	Human, Rat, Rabbit, Dog, Guinea Pig, Horse, Bovine
Host	Rabbit
Clonality	Polyclonal
Calculated MW	70109

Additional Information

Gene ID	2160
Alias Symbol	FXI, MGC141891
Other Names	Coagulation factor XI, FXI, 3.4.21.27, Plasma thromboplastin antecedent, PTA, Coagulation factor XIa heavy chain, Coagulation factor XIa light chain, F11
Format	Liquid. Purified antibody supplied in 1x PBS buffer with 0.09% (w/v) sodium azide and 2% sucrose.
Reconstitution & Storage	Add 50 ul of distilled water. Final anti-F11 antibody concentration is 1 mg/ml in PBS buffer with 2% sucrose. For longer periods of storage, store at 20°C. Avoid repeat freeze-thaw cycles.
Precautions	F11 antibody - C-terminal region is for research use only and not for use in diagnostic or therapeutic procedures.

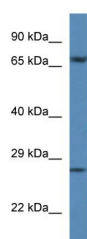
Protein Information

Name	F11
Function	Factor XI triggers the middle phase of the intrinsic pathway of blood coagulation by activating factor IX.
Cellular Location	Secreted.
Tissue Location	Isoform 2 is produced by platelets and megakaryocytes but absent from other blood cells

References

Fujikawa K.,et al.Biochemistry 25:2417-2424(1986).
Asakai R.,et al.Biochemistry 26:7221-7228(1987).
Hsu T.-C.,et al.J. Biol. Chem. 273:13787-13793(1998).
Hillier L.W.,et al.Nature 434:724-731(2005).
Mural R.J.,et al.Submitted (SEP-2005) to the EMBL/GenBank/DDBJ databases.

Images



WB Suggested Anti-F11 Antibody Titration: 1.0 µg/ml
Positive Control: Hela Whole Cell

Please note: All products are 'FOR RESEARCH USE ONLY. NOT FOR USE IN DIAGNOSTIC OR THERAPEUTIC PROCEDURES'.