

HK1 antibody - N-terminal region

Rabbit Polyclonal Antibody

Catalog # AI14605

Product Information

Application	WB
Primary Accession	P19367
Other Accession	NM_033498 , NP_277033
Reactivity	Human, Mouse, Rat, Rabbit, Zebrafish, Pig, Dog, Guinea Pig, Horse, Bovine
Predicted	Human, Mouse, Rabbit, Zebrafish, Pig, Chicken, Dog, Guinea Pig, Horse, Bovine
Host	Rabbit
Clonality	Polyclonal
Calculated MW	103 KDa

Additional Information

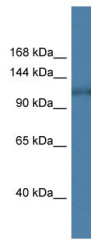
Alias Symbol	HK1-ta, HK1-tb, HK1-tc, HKI, HXK1
Other Names	Hexokinase-1, 2.7.1.1, Brain form hexokinase, Hexokinase type I, HK I, HK1
Format	Liquid. Purified antibody supplied in 1x PBS buffer with 0.09% (w/v) sodium azide and 2% sucrose.
Reconstitution & Storage	Add 50 ul of distilled water. Final anti-HK1 antibody concentration is 1 mg/ml in PBS buffer with 2% sucrose. For longer periods of storage, store at 20°C. Avoid repeat freeze-thaw cycles.
Precautions	HK1 antibody - N-terminal region is for research use only and not for use in diagnostic or therapeutic procedures.

Protein Information

References

- Nishi S., et al. *Biochem. Biophys. Res. Commun.* 157:937-943(1988).
Ruzzo A., et al. *Biochem. J.* 331:607-613(1998).
Deloukas P., et al. *Nature* 429:375-381(2004).
Andreoni F., et al. *Biochim. Biophys. Acta* 1493:19-26(2000).
Murakami K., et al. *Blood* 90:272-272(1998).

Images



WB Suggested Anti-HK1 Antibody Titration: 1.0 $\mu\text{g/ml}$
Positive Control: Fetal Heart

Please note: All products are 'FOR RESEARCH USE ONLY. NOT FOR USE IN DIAGNOSTIC OR THERAPEUTIC PROCEDURES'.